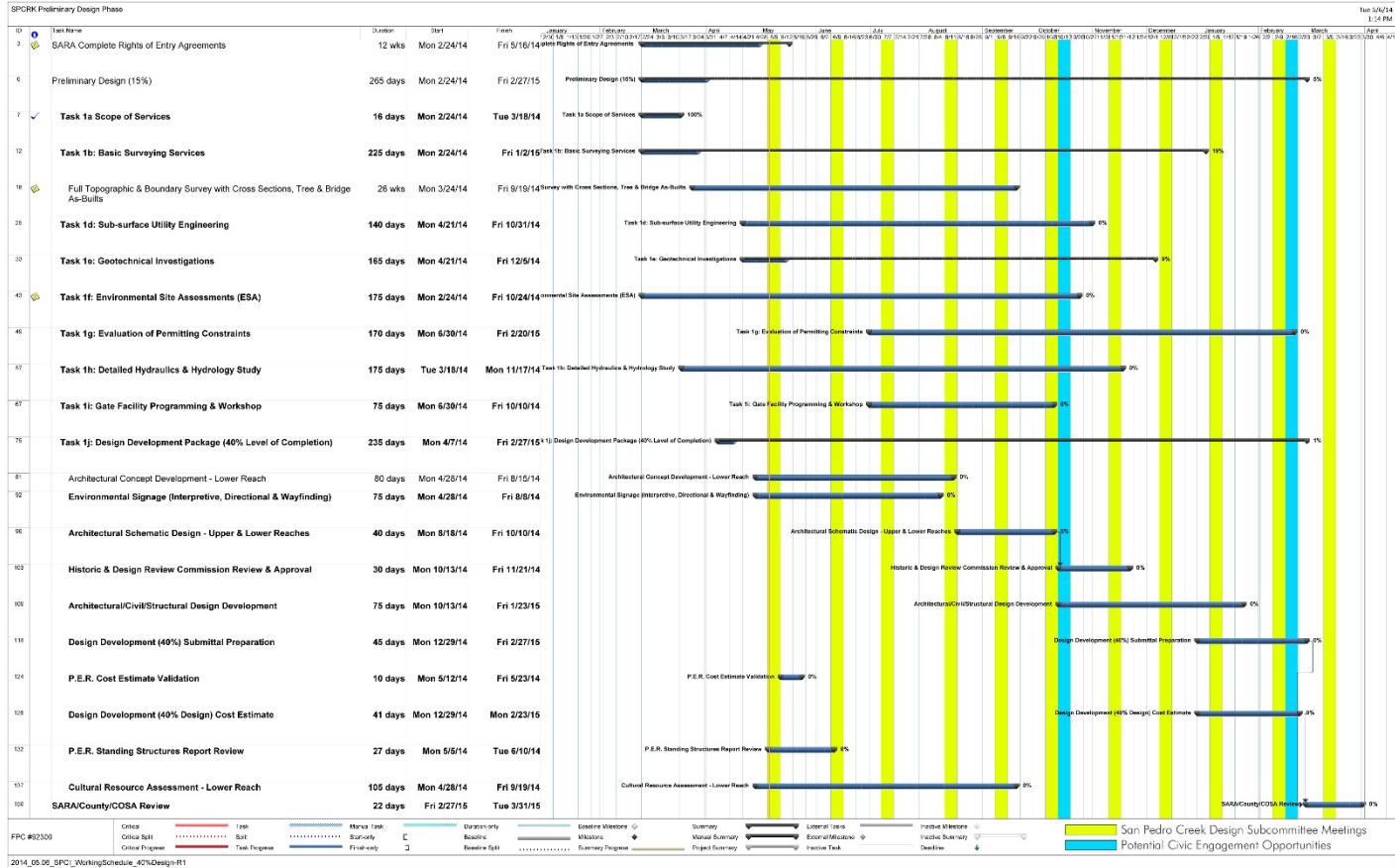


Working Schedule



CURRENT/FUTURE ACTIVITIES



- SITE-CIVIL:
 - Level 1 ESA (complete early June).
 - Level 2 ESA (complete mid July).
 - Establish Project ROW (complete late May).
 - Geotechnical Borings (off and on through Oct).

CURRENT/FUTURE ACTIVITIES



- SITE-CIVIL, CONT:
 - Detailed survey data collection (end Sept/Oct).
 - Mapping of existing utilities (end late June).
 - Coordination of project cross sections (end late June).

CURRENT/FUTURE ACTIVITIES



- HYDRAULICS AND HYDROLOGY (H&H):
 - Collect data on existing systems (end late May).
 - Calibrate models to reflect true operation of the tunnel (conclude end of May).
 - Update PER model for initial project design (conclude end of June).

CURRENT/FUTURE ACTIVITIES



- H&H, CONTINUED:
 - Develop more detailed model of existing floodplain (conclude late August)
 - Develop more detailed model of new floodplain, after project (conclude late October).

CURRENT/FUTURE ACTIVITIES



- ARCHITECTURAL:
 - Develop concepts for aquatic plantings (conclude mid June).
 - Identify site programming constraints and opportunities (conclude mid June).
 - Cultural mapping, interpretive topics (conclude mid June).
 - Programming/vision for new project elements (conclude June, early July).

CURRENT/FUTURE ACTIVITIES



- BRIDGES/STRUCTURAL:
 - Collect data on existing buildings, bridges, other structures (May/June).
 - Field observations (May/June).
 - Evaluate existing structures

CURRENT/FUTURE ACTIVITIES



- MANAGEMENT:
 - Dataroom set up (“Projectwise”), end May
 - Production document guidelines and standards (conclude in May).
 - Update of PER cost estimate (conclude end of May).

END OF PRESENTATION

