

SAN PEDRO CREEK IMPROVEMENTS

SAN ANTONIO, TX



SAN ANTONIO
RIVER AUTHORITY

Leaders in Watershed Solutions

Design Activity Update



- Past Month and Ongoing:
 - April 14: Presentation to Commissioner’s Court and Court approval
 - May 6: Approval by HDRC
 - May 9: Robert Hammond Community Lecture, SAMA
 - Since April 15:
 - Study of potential, future construction phasing options
 - Organizing for and launching the 70% design
 - Continued architectural design progress

Background/History



- ❖ 2012: Bexar County authorized Preliminary Engineering Report (PER)
- ❖ 2012: Bexar County, City of San Antonio, and San Antonio River Authority executed Letter Agreement for interagency coordination on San Pedro Creek Improvements Project
- ❖ May 2013: Bexar County presented results of PER study and authorizes \$125 million toward the project
- ❖ December 2013: Bexar County approved design budget and design team
- ❖ February 2014: Commissioners Court approved Cooperative Agreement with San Antonio River Authority authorizing initiation of final design phase, launching the 40% design

Components of 40% Design

- ❖ Further investigation of existing conditions
 - ❖ Survey, utility coordination, geotechnical
 - ❖ Cultural resources (intensive pedestrian surveys, standing structures, historic context)
 - ❖ Environmental Site Assessments (ESA's), Phase I and Phase II
 - ❖ Permitting constraints, water rights and supply study
 - ❖ Floodplain (hydraulics and hydrology)

Components of 40% Design, Cont



- ❖ Further development of design elements
 - ❖ Maximizing flood capacity
 - ❖ Architectural design development
 - ❖ Incorporating public comments
 - ❖ Coordinating with adjacent property owners
 - ❖ Visualization of design elements
 - ❖ Refining project cost and construction approaches

Summary of Key Project Elements



- ❖ Approximately 2 miles of channel with a project area covering 22 acres
- ❖ Almost 4 miles of paseo (trail)
- ❖ About 11 ½ acres of landscaped area
- ❖ 30 acres of the City removed from the corrected floodplain
- ❖ 8 City street bridges replaced
- ❖ 6 new pedestrian bridges
- ❖ 6 existing City bridges with rehabilitation
- ❖ 1 new railroad bridge
- ❖ About 60,000 linear feet of new walls
- ❖ 3 new channel gates
- ❖ 1 new amphitheater

Engineering Update, 40%



HDR Engineering, Inc



Pape Dawson Engineers, Inc

Flood Control Summary

- ❖ 30 acres along the project is within the corrected floodplain
- ❖ With the 40% design, the project will contain the floodplain within the channel and remove all this property from the floodplain
 - ❖ Design includes modifications to channel and bridges
- ❖ Channel design will have additional capacity to significantly reduce historic flooding concerns in the Elmira neighborhood
 - ❖ Coordination underway with City of San Antonio to determine COSA infrastructure that will be a necessary part of future solutions



Floodplain Will Be Contained

Floodplain Area Outside the Channel:

Floodplain	U/S Cesar Chavez	D/S Cesar Chavez	Total
Existing	4.09 ac	26.11 ac	30.20 ac

Acreage does not include main channel area.

Legend

-  Main Channel Area
-  Project Floodplain



US Project Limit to Houston St.



Houston St. to Cesar Chavez Blvd.

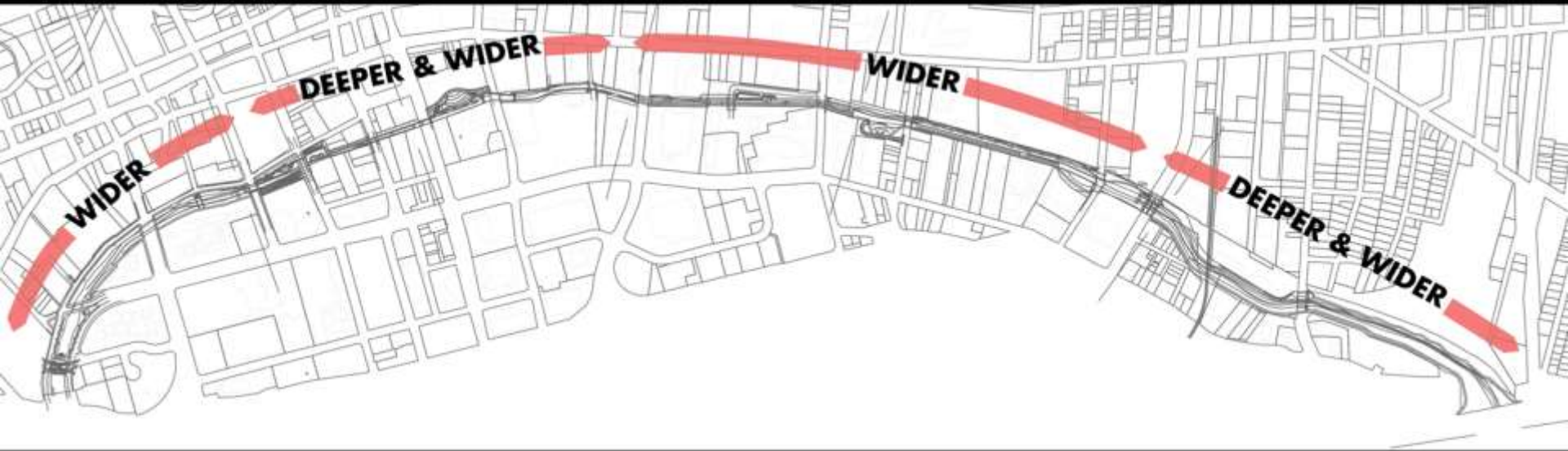


Cesar Chavez Blvd. Camp St.



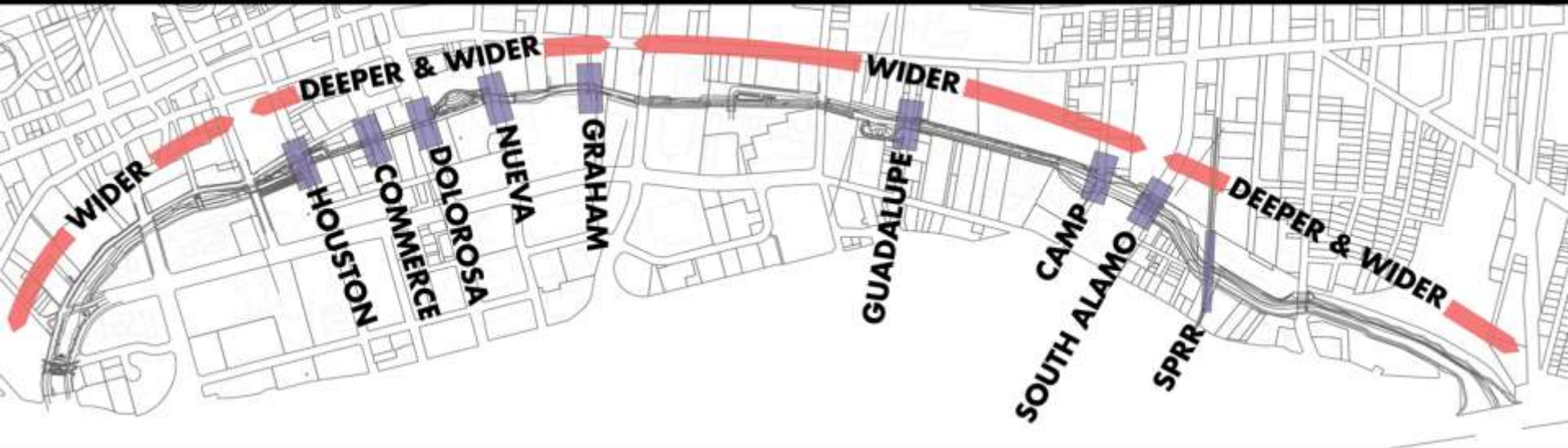
Camp St. to DS Project Limit

INCREASE CHANNEL CAPACITY



WIDEN AND/OR DEEPEN EXISTING CHANNEL

REPLACE CONSTRAINING BRIDGES



8 NEW STREET BRIDGES • 1 NEW RAILROAD BRIDGE

Water Supply

- ❖ River water supplied to the project will be used to:
 - ❖ Overcome evaporative losses
 - ❖ Irrigate landscaped areas
 - ❖ Aid in the control of algae growth
- ❖ Maximum annual water requirements = 300 acft/yr
- ❖ Water supply facilities sized to deliver 1 cubic ft/sec (cfs) for seasonal peaking

Key Permitting

❖ USACE Permitting

- ❖ Section 408 review of potential effect to federal flood risk infrastructure
- ❖ Section 404 review of potential effect to aquatic resources
- ❖ Includes review of potential effect to historic properties (coordinated with other agencies)
- ❖ Critical path to start channel construction

❖ Water Rights Permitting (TCEQ)

- ❖ 3 new reservoirs created by gate facilities
- ❖ Bed & banks authorization to use San Antonio River for delivery of SAWS recycle water to project; part of existing COSA allocation

- ❖ Phase 2 Environmental Site Assessments (ESA's)
Conducted
 - ❖ 88 Soil borings/196 soil samples
 - ❖ Groundwater evaluation at 6 locations
- ❖ All materials confirmed as non-hazardous
 - ❖ Materials can be transported and accepted at local landfill (same manner as household garbage)
 - ❖ 19 additional soil borings conducted to verify acceptance and reduce stockpiling
- ❖ Required groundwater management has been minimized

ARCHITECTURAL PRESENTATION

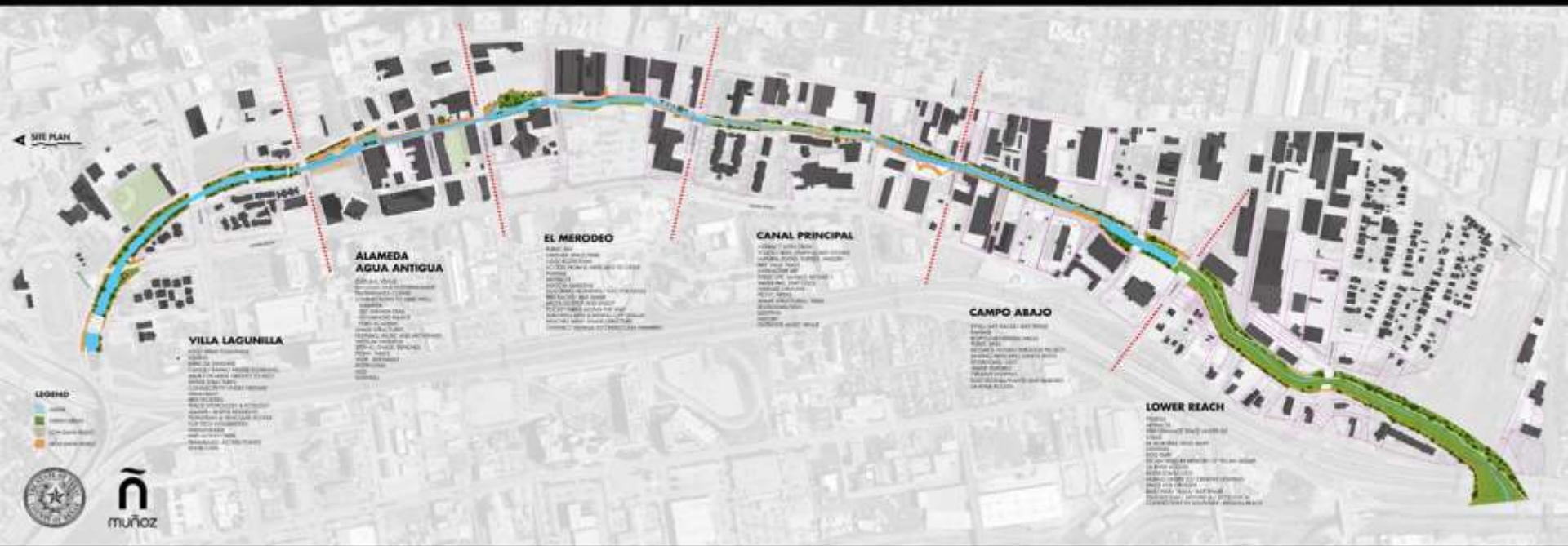
H Munoz & Company

muñoz



SAN PEDRO CREEK CULTURE PARK

SUBCOMMITTEE MEETING
MAY 14, 2015



40% DESIGN MILESTONE

OUR MISSION IS TO CREATE A
WORLD CLASS LINEAR PARK THAT
REPRESENTS THE CULTURAL IDENTITY
OF OUR COMMUNITY AND INSPIRES
THE PEOPLE OF BEXAR COUNTY.



DESIGN GOALS

PROVIDE ENHANCED FLOOD CONTROL.

MAXIMIZE ECONOMIC BENEFITS OF THE PROJECT.

CREATE A WORLD CLASS EXPERIENCE FOR RESIDENTS AND VISITORS.

ELEVATE AND EDUCATE OUR COMMUNITY PROFILE IN SUSTAINABILITY.

ENGAGE OUR COMMUNITY IN A GRASS-ROOTS DESIGN EFFORT.

REFLECT THE UNIQUE CULTURE OF BEXAR COUNTY.

IMPROVED WATER QUALITY AND AQUATIC HEALTH.



**STRONG
CURATORIAL
VISION**

A man wearing a brown hoodie, safety glasses, and a white earphone cord is standing on a yellow ladder. He is holding a clipboard in his left hand and pointing with his right hand towards a wall made of light-colored rectangular tiles. The wall has some dark, vertical markings or graffiti. In the background, there is a street with buildings and trees under an overcast sky.

**JORGE
RODRIGUEZ-
GERADA**



A COMMUNITY LECTURE

ROBERT
HAMMOND



A large, diverse audience is seated in a lecture hall, filling the frame from the foreground to the background. The audience members are of various ages and ethnicities, all appearing attentive. The setting is a well-lit room with wood-paneled walls and blue seats. The text 'A COMMUNITY LECTURE' is overlaid in large white letters at the top of the image.

A COMMUNITY LECTURE

ROBERT
HAMMOND

JOHN PHILLIP SANTOS

EDUCATIONAL

EXPERIENCE

FILM

WESTERN

STORY





SPLENDID PASEOS



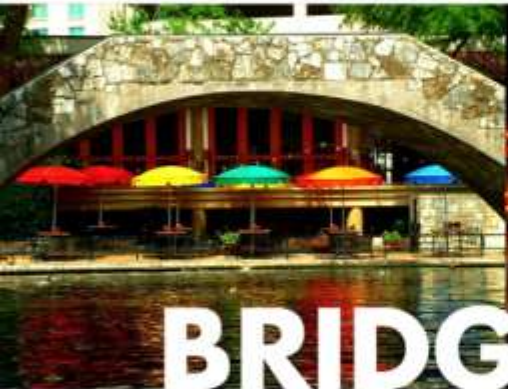
RIBBONS OF LIFE



ICONIC ARCHITECTURE



PLACES OF RESPITE





BRIDGES & PORTALS






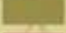

CULTURAL CRAFT

REGIONAL

Legend

-  San Antonio River Basin
-  San Antonio River

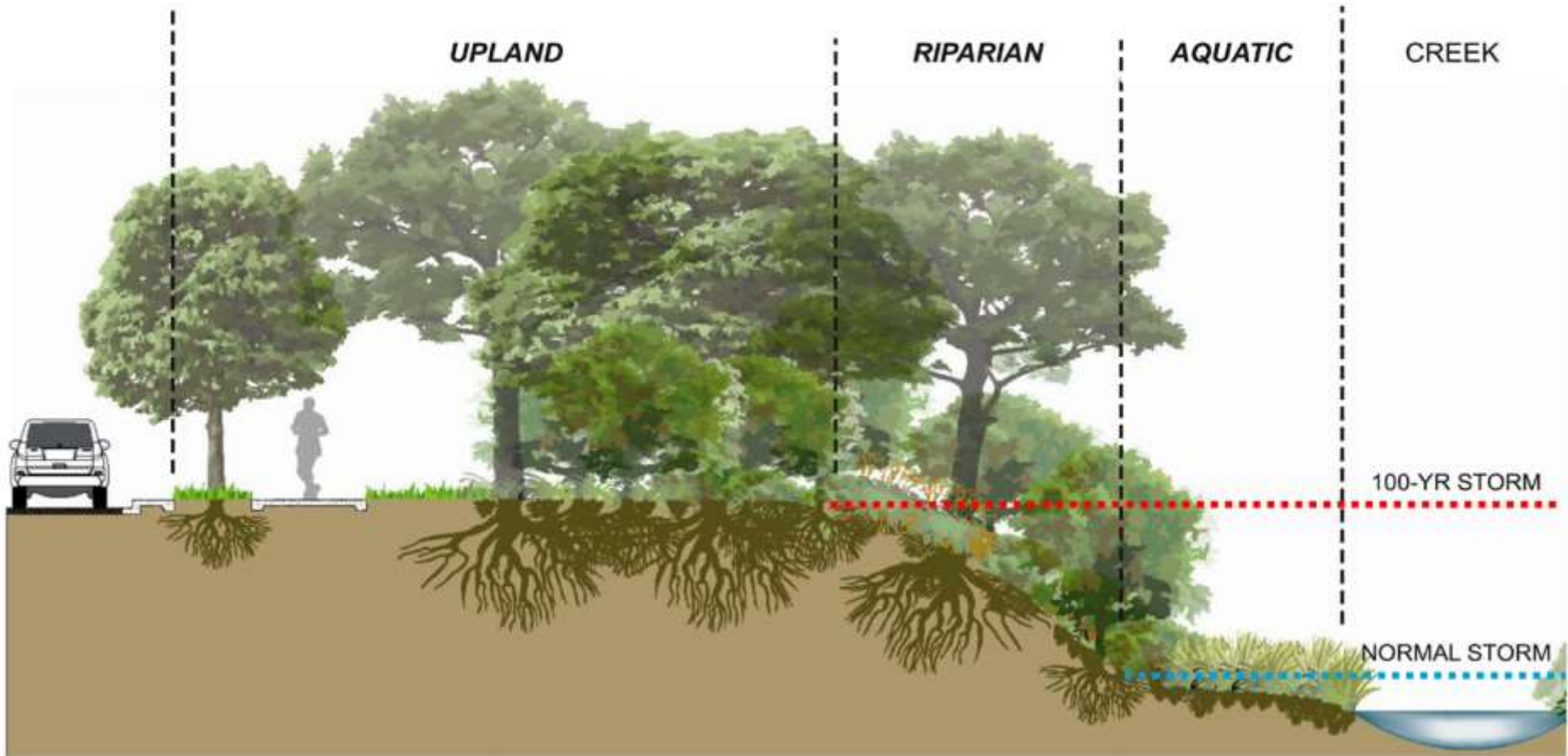
Ecoregions

-  Edwards Plateau
-  Southern Texas Plains
-  Texas Blackland Prairies
-  East Central Texas Plains
-  Western Gulf Coastal Plain

0 5 10 20 30 Miles



LOCAL



BUTTERFLY WEED



SILVERLEAF NIGHTSHADE

COLOR

VELVET LEAF SENNA



CEDAR SAGE

HUISACHE



BALD CYPRESS



TEXTURE

LITTLE BLUESTEM



HORSETAIL



WATER LILY



FORM

INLAND SEA OATS



DWARF PALMETTO



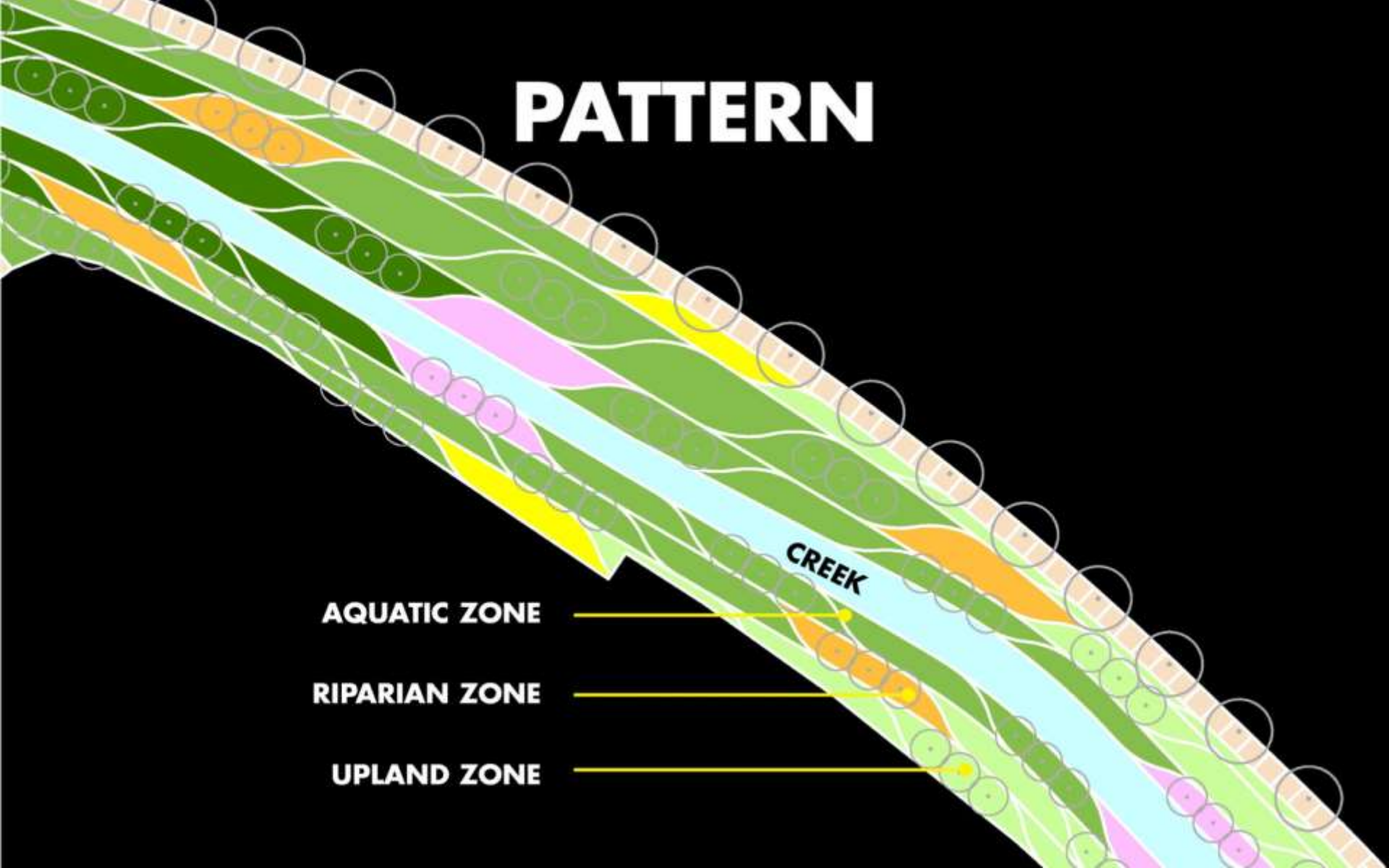
INDIAN BLANKET



INSPIRATION



PATTERN



AQUATIC ZONE

RIPARIAN ZONE

UPLAND ZONE

VILLA LAGUNILLA

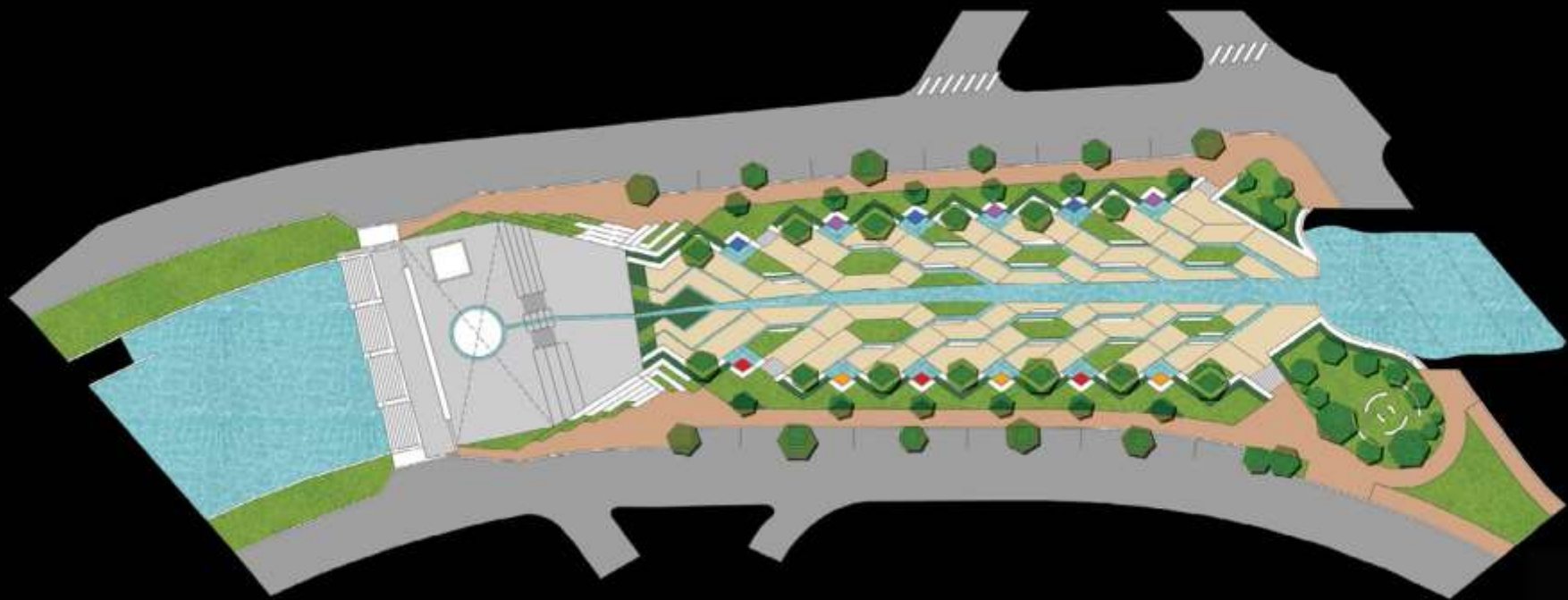
Santa Rosa Avenue to Travis Street

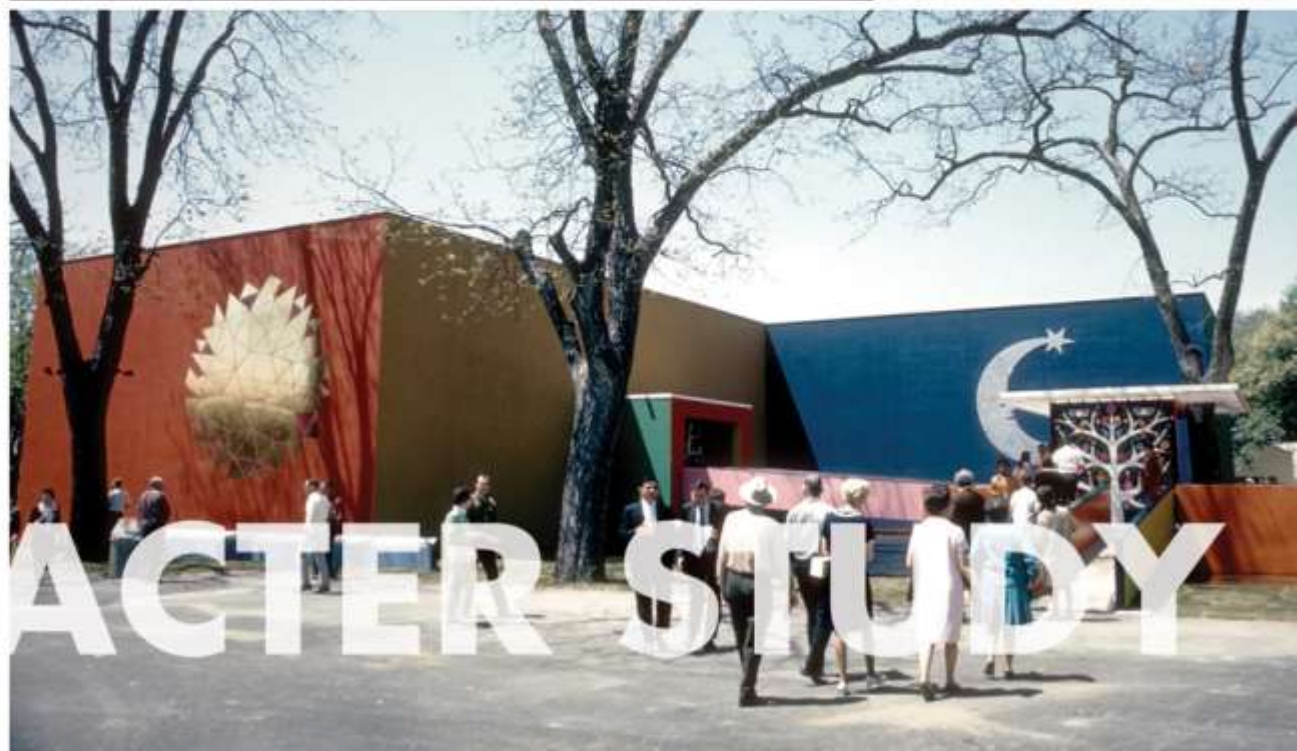
Imagining a small town lake as a neighborhood park for downtown residential growth and a blossoming creative class. Offers physical and visual respite and an expanded riparian habitat.

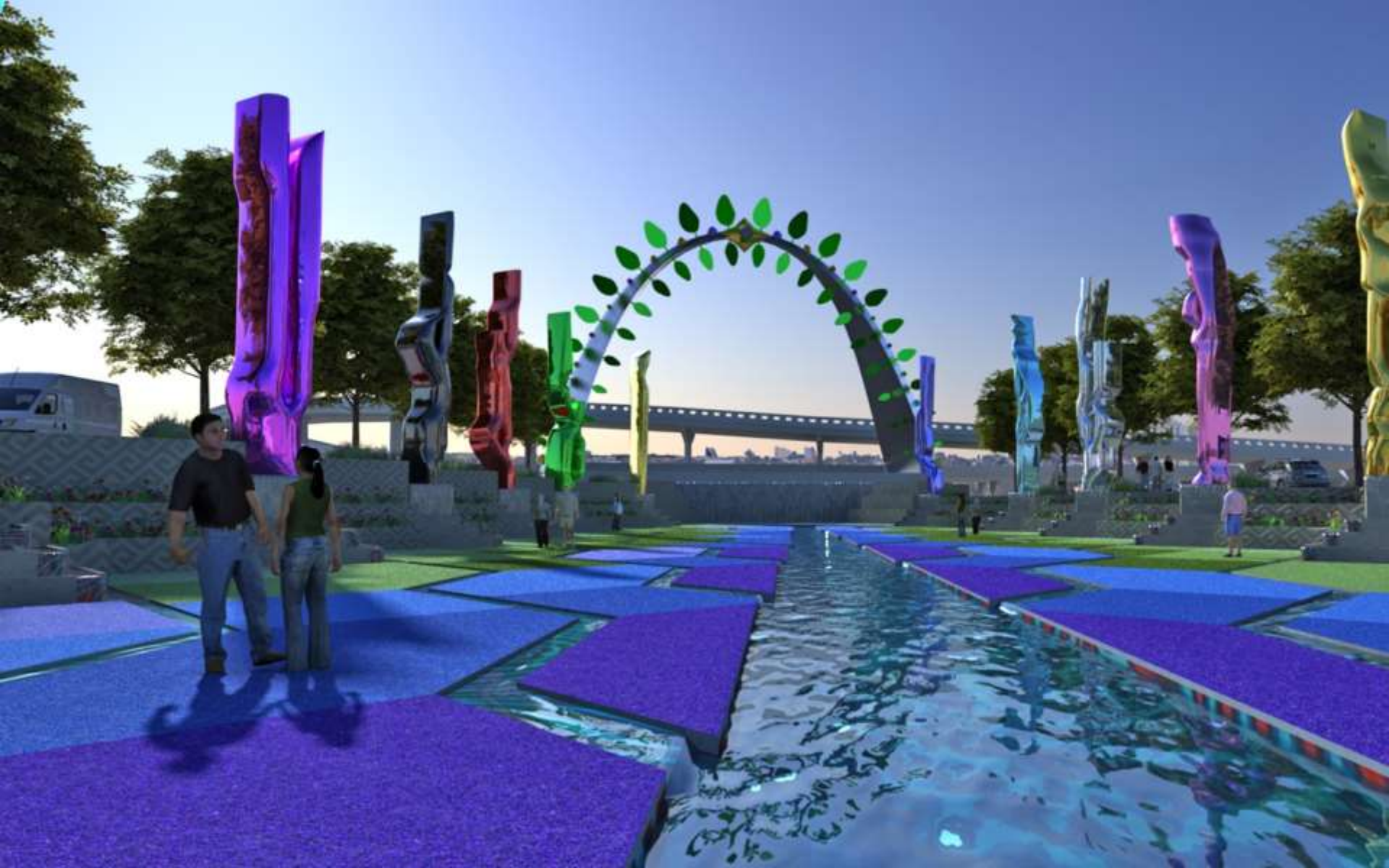


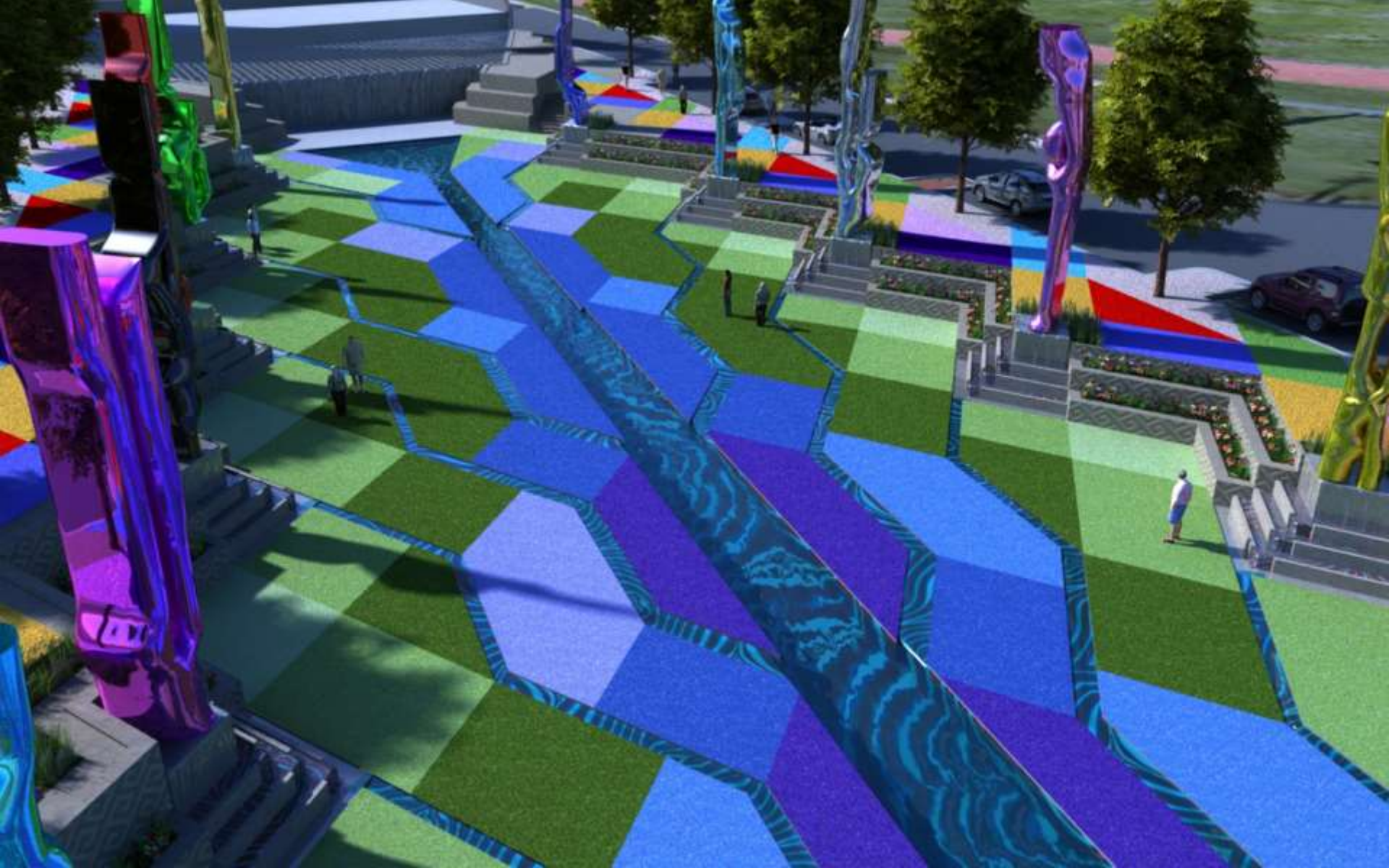
- 1 TREE OF LIFE PLAZA
- 2 SALINAS BRIDGE

TREE OF LIFE PLAZA







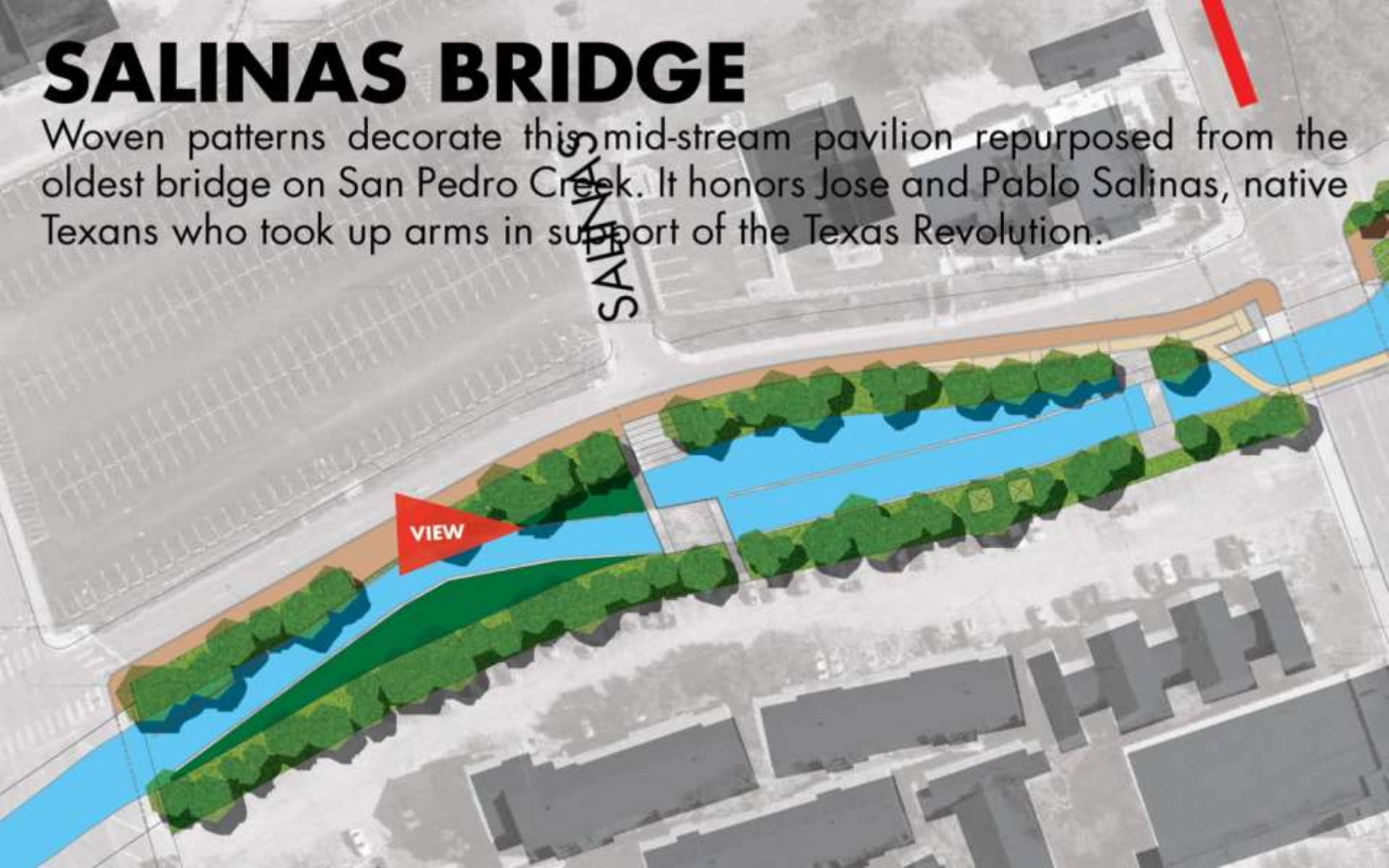


VILLA LAGUNILLA



SALINAS BRIDGE

Woven patterns decorate this mid-stream pavilion repurposed from the oldest bridge on San Pedro Creek. It honors Jose and Pablo Salinas, native Texans who took up arms in support of the Texas Revolution.



OAXACA BASKETS



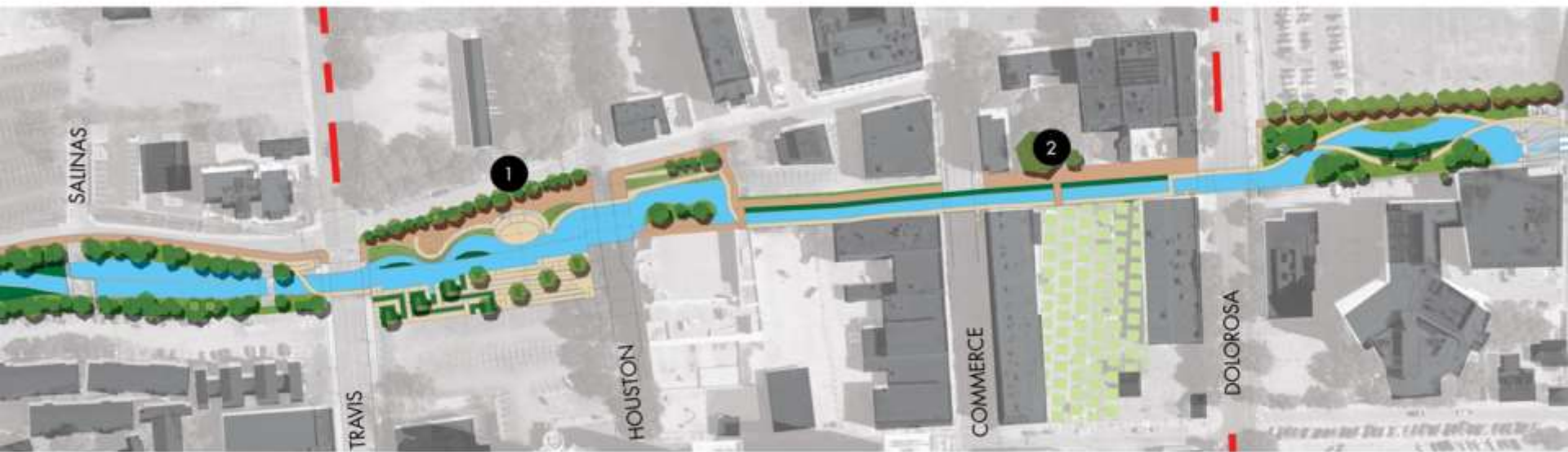


SALINAS BRIDGE & SHADE STRUCTURE



ALAMEDA/AGUA ANTIGUA

Between Travis and Dolorosa Streets

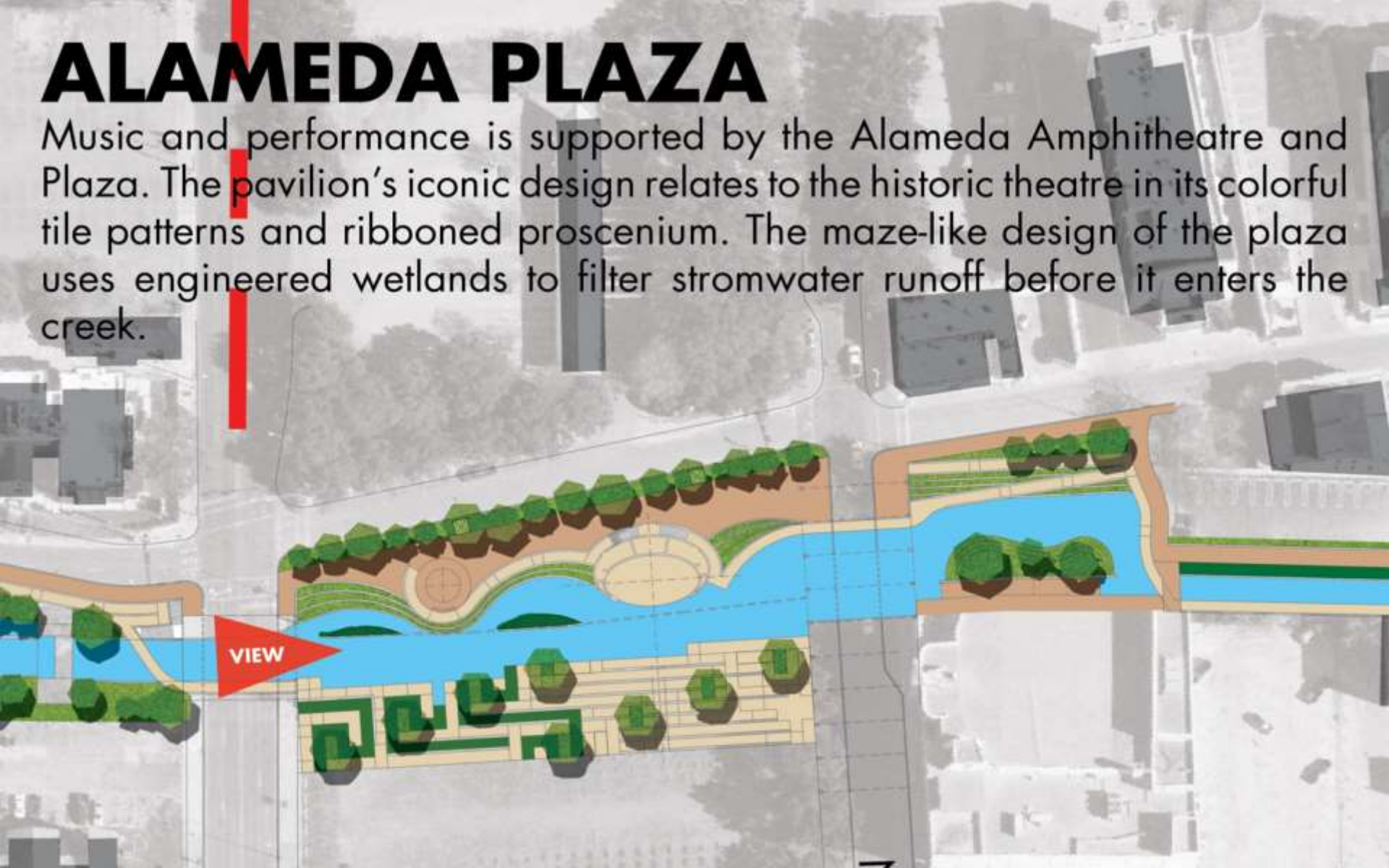


1 ALAMEDA AMPHITHEATER & PLAZA

2 Calder Alley

ALAMEDA PLAZA

Music and performance is supported by the Alameda Amphitheatre and Plaza. The pavilion's iconic design relates to the historic theatre in its colorful tile patterns and ribboned proscenium. The maze-like design of the plaza uses engineered wetlands to filter stormwater runoff before it enters the creek.





ARNESON RIVER THEATER



**ALAMEDA
THEATER**

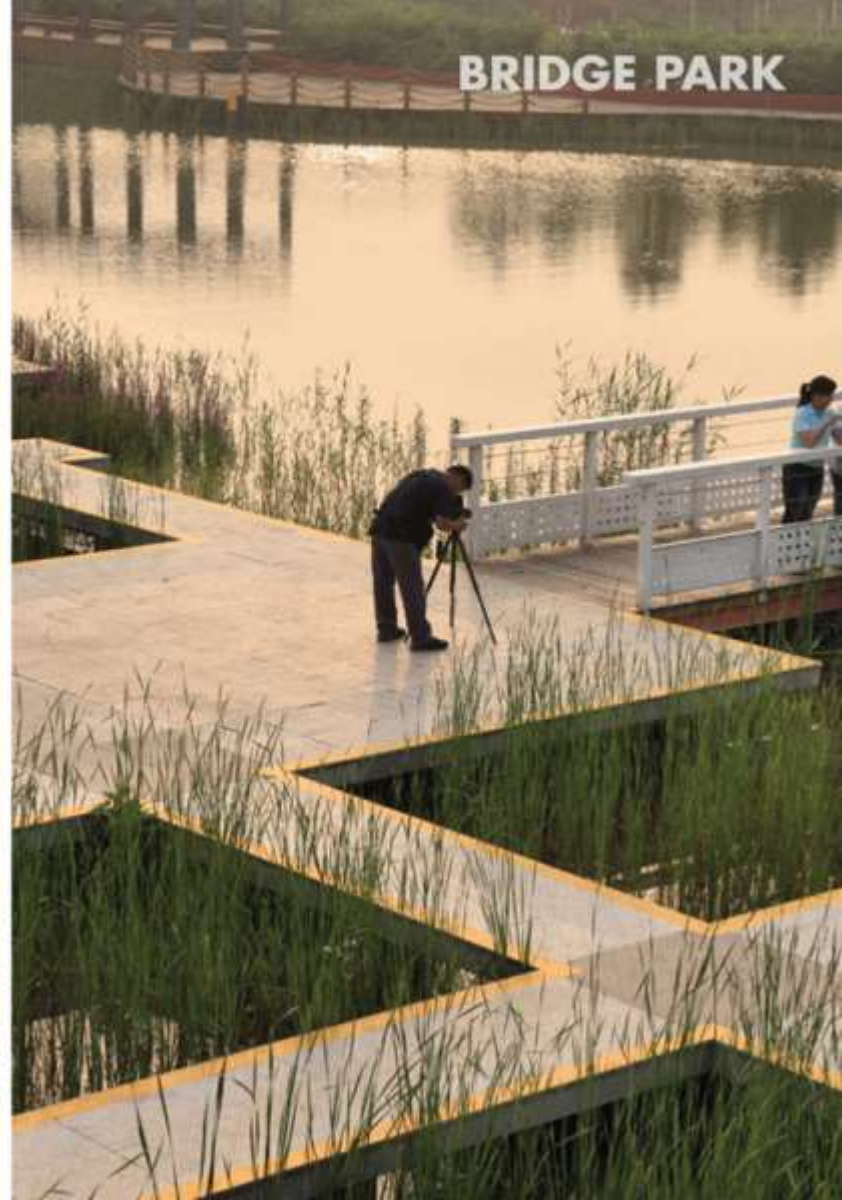


**ALAMEDA
THEATER**

TEXTURE GARDEN



BRIDGE PARK



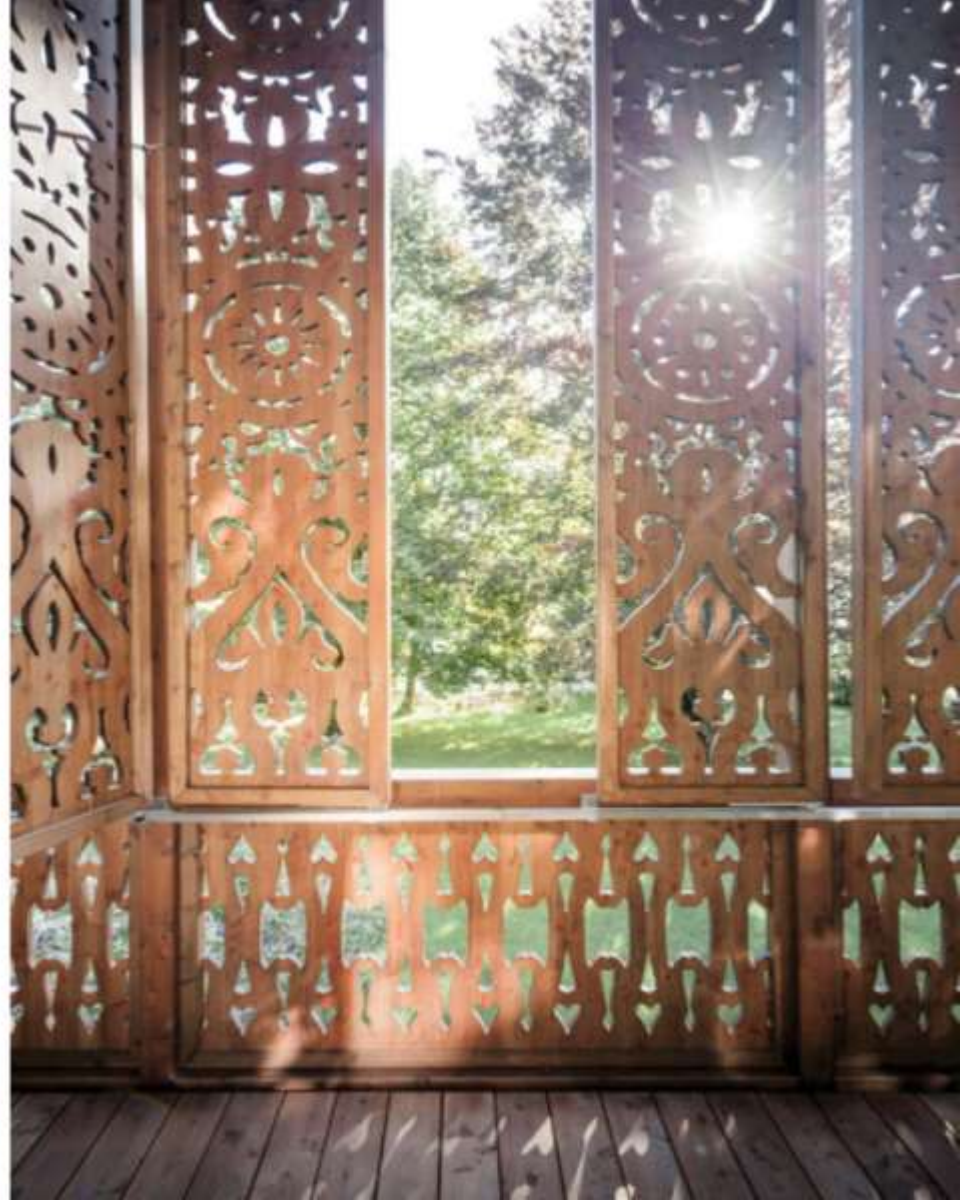


ALAMEDA AMPHITHEATER & PLAZA





WOOD SCROLLWORK



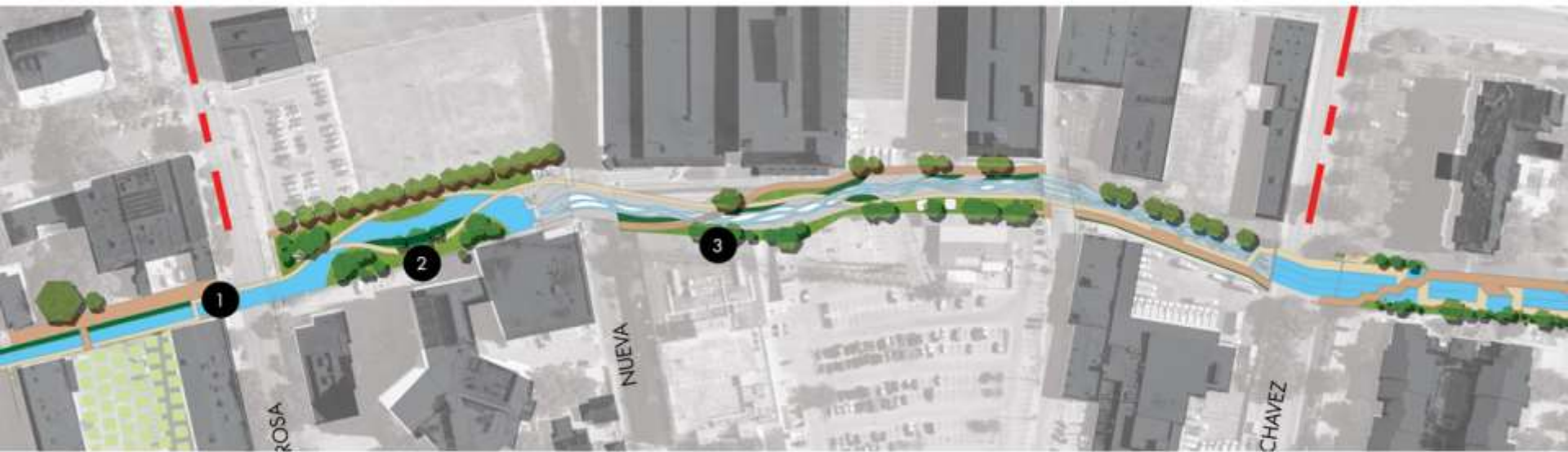


CALDER ALLEY COMMERCE ST. BRIDGE



MERODEO

Between Dolorosa and Cesar Chavez Streets



1 DOLOROSA BRIDGE

2 THE LAWN

3 TREE BRIDGE AND THE NARROWS

DOLOROSA BRIDGE



MERODEO LAWN

Gently sloping grass banks make this a prized urban green space where the creek will have room to meander. The paseos' curves and low slopes make this area especially accessible and conducive for relaxing. Francisco Ruiz and Jose Navarro lived next to the creek in this area and are part of the interpretive program.







MERODEO LAWN



MERODEO LAWN



MERODEO TREE BRIDGE

The architectural craft of *faux bois*, cement made to look like natural wood, is exuberantly applied to this otherwise plain but long concrete footbridge. The tree bridge winds its way through the deepest and narrowest part of the creek; its eroded natural stone walls reverberant with the sound of the water flowing over the rocky bottom.

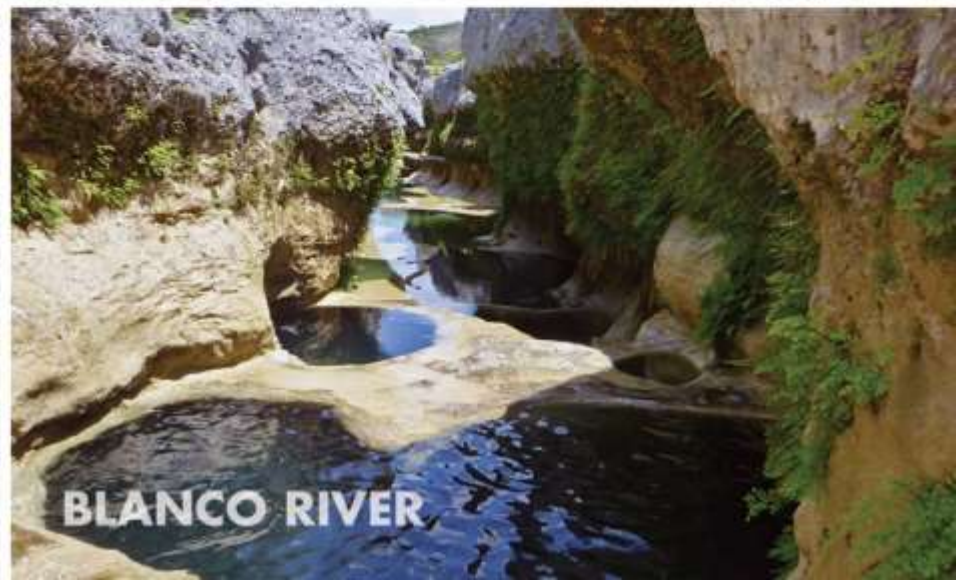




BRACKENRIDGE PARK BRIDGE



HISTORIC WALLS



BLANCO RIVER



The Home of Texas' Best Eatin'

Bill Miller
Bar-B-Q

Locations in Austin, Corpus Christi
& the greater San Antonio Area



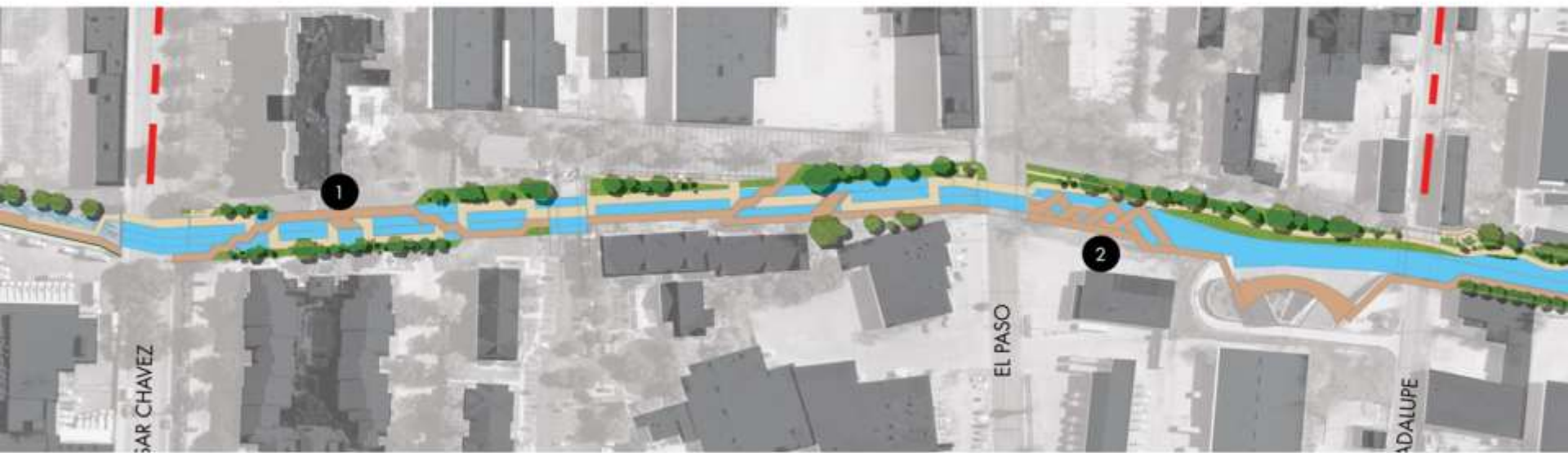
BILL MILLER
BAR-B-Q
TEXAS

MERODEO TREE BRIDGE



CANAL PRINCIPAL

Between Cesar Chavez Boulevard and El Paso Street



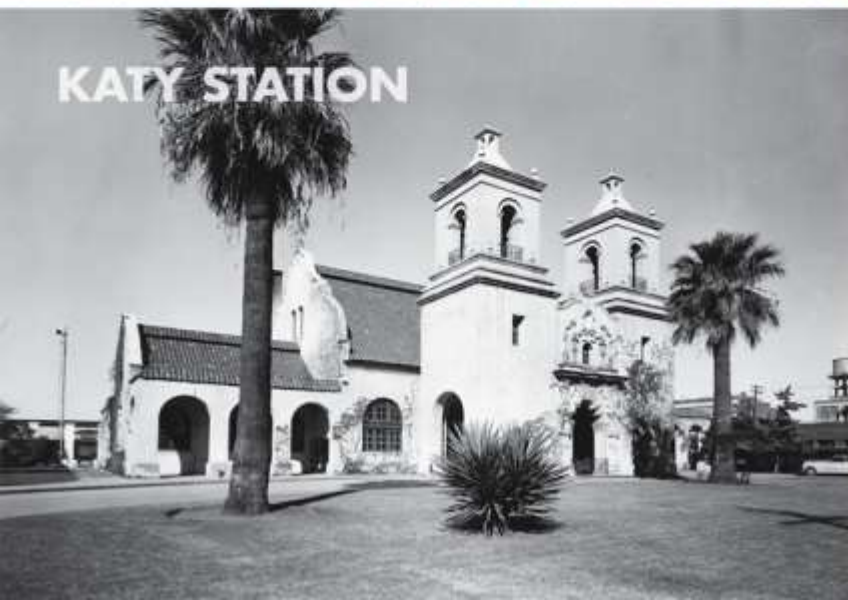
1 THE TRACKS

2 PLAY PAVILION

CANAL PRINCIPAL THE TRACKS

An entirely new waterscape for people and wildlife will result from exhuming the creek now buried in a concrete culvert. Site of the former MKT Rail Yard, the design sculpts the concrete boxes and draws inspiration from the industrial character of trains and rails.







THE TRACKS

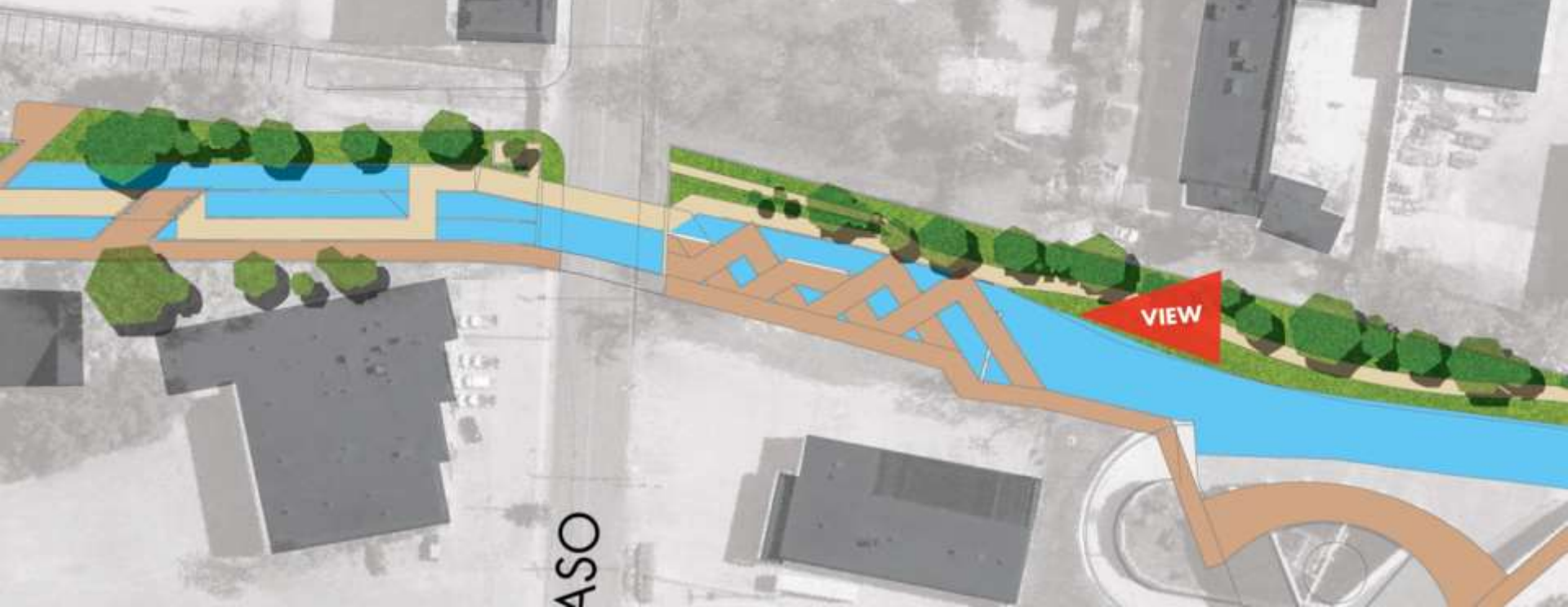


THE TRACKS



PLAY PAVILION

This destination playscape snakes its way along the tail end of the box culvert and allows children ample height for adventure without the risk of a great fall. The design mixes comfort for parents and children alike with added seating, shade and outlooks.





HOLLA SYSTEM WALL

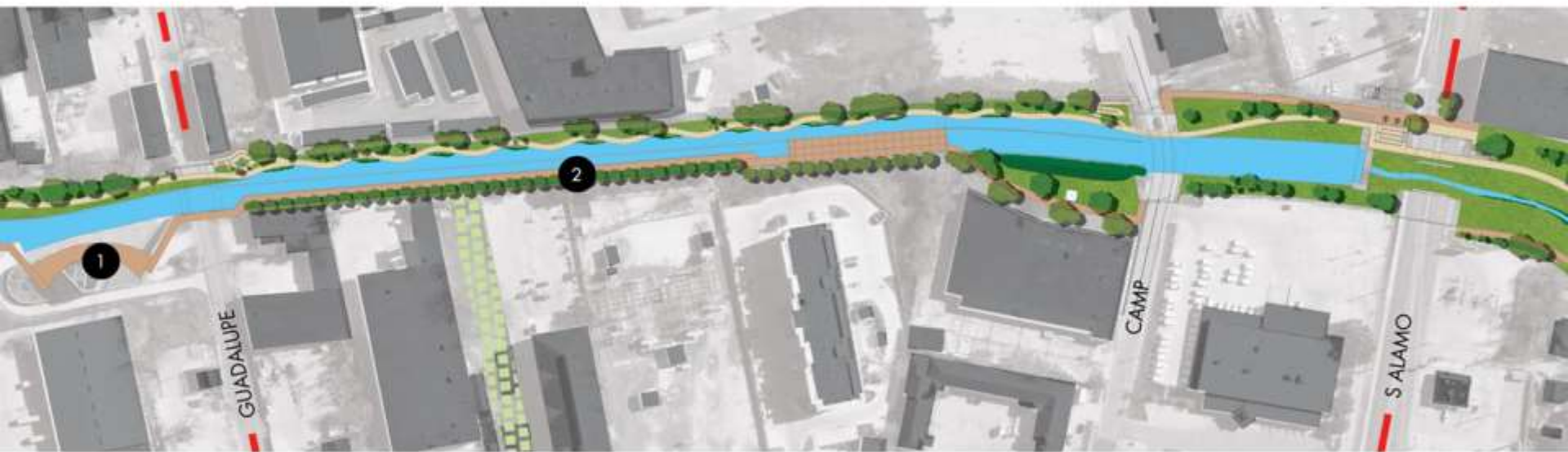


PLAY PAVILION



CAMPO ABAJO

Between Guadalupe and South Alamo Streets

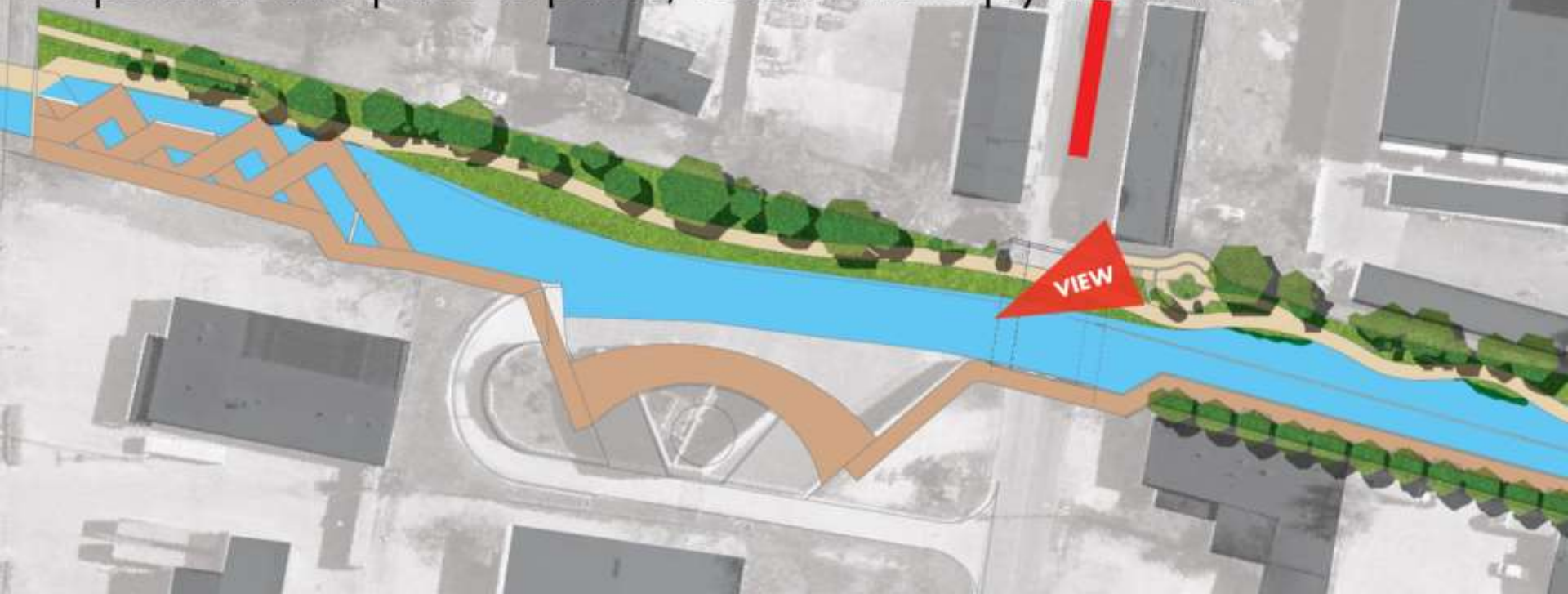


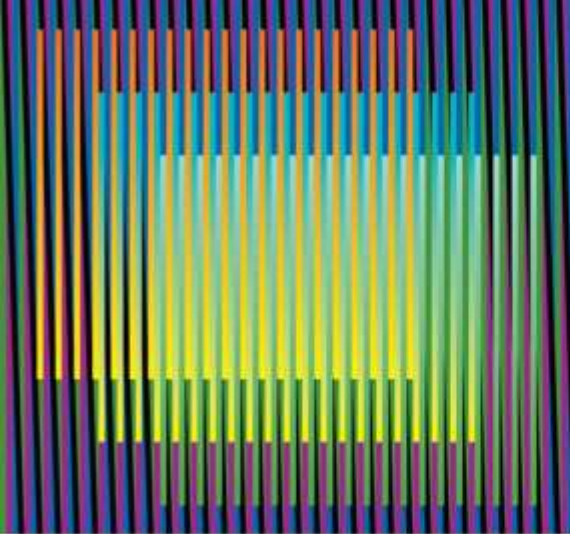
1 THE OUTLET

2 ESPLANADE

TUNNEL OUTLET STRUCTURE

Counterpoint to the tree of life plaza, the design intervention at the tunnel outlet structure reclaims the industrial facility as a elevated terrace with space for concession and restrooms. A monumental curved wall of shimmering metal and water cascades visually screening the grillage creates an audible experience and place to pause, refresh and enjoy the views.





CARLOS CRUZ-DIEZ WALL



NED KHAN - KINETIC SCREEN





THE OUTLET



THE OUTLET



CAMPO ABAJO LOWER REACH





SAN PEDRO CREEK CULTURE PARK

SUBCOMMITTEE MEETING
MAY 14, 2015

Next Steps

- ❖ April-May 2015 – Coordinate and reconcile anticipated costs, project phasing, construction contracting, start to 70% design
- ❖ May 30, 2015 – Third public outreach
- ❖ June 2015 – City of San Antonio action to convey parcels and reuse water to project
- ❖ July 31, 2015 – 70% design deliverable
- ❖ August 2015 – Secure needed property
- ❖ February 2016 – Final design
- ❖ May 2016 – Start construction
- ❖ May 2018 – Complete significant section for 300th Anniversary

Potential Construction Phasing

