

SAN PEDRO CREEK IMPROVEMENTS PROJECT



SAN ANTONIO
RIVER AUTHORITY
Leaders in Watershed Solutions



SAN ANTONIO
RIVER AUTHORITY
Leaders in Watershed Solutions



muñoz

**PAPE-DAWSON
ENGINEERS**

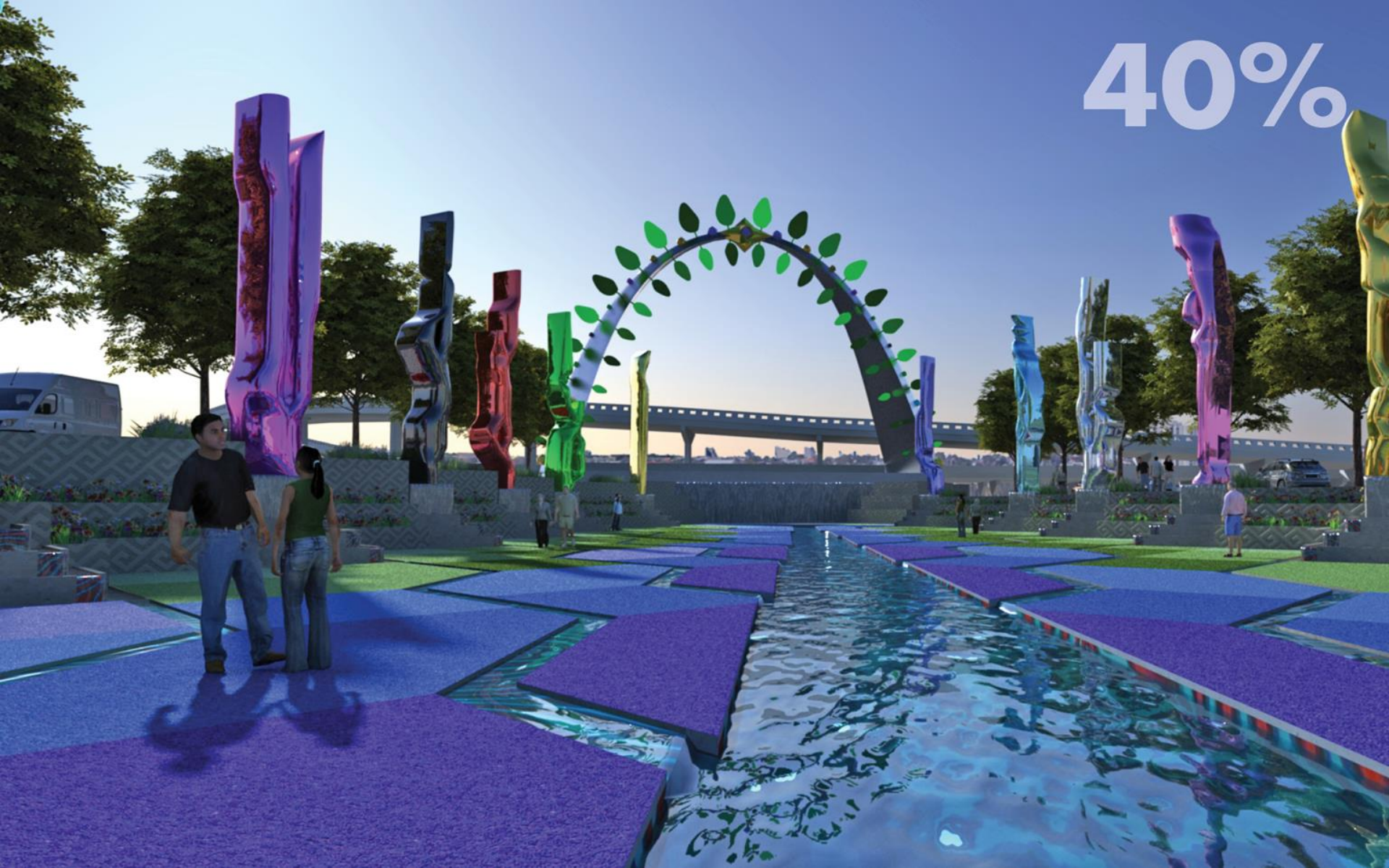
- ❖ Last Subcommittee meeting, 8/7/2015:
 - ❖ Review of design to 70% milestone
 - ❖ Preview of Commissioner's Court Presentation Themes:
 - ❖ Design vision coordination at key nodes
 - ❖ Tree of Life Plaza
 - ❖ Alameda performance stage
 - ❖ Salinas Street
 - ❖ Potential opportunities for construction cost reduction

- ❖ Commissioner Court Presentation, 8/11/2015:
 - ❖ Key components
 - ❖ General project update
 - ❖ Architectural team update
 - ❖ Proposed design response to key concerns
 - ❖ Landscape, wayfinding design
 - ❖ Storytelling and art coordination
 - ❖ Review of project budget and pathway forward
 - ❖ Court response and actions

- ❖ Commissioner Court Presentation, 8/11/2015:
 - ❖ Court actions and project mandate
 - ❖ Approval of 70% design milestone/completion
 - ❖ Finalize project phasing around a phase 1, 2 construction cost that can be accomplished with available funding (estimated \$97.8 million construction cost)
 - ❖ Finalize design scope with respect to recommended changes
 - ❖ Complete 90% design for phases 1 and 2
 - ❖ Deliver the design for phases 3 and 4 at a later date

- ❖ Significant project changes from and since 8/11 Commissioner's Court:
 - ❖ Remove arch from Tree of Life Plaza, increased plantings
 - ❖ Remove shade structure from Salinas Street bridge
 - ❖ Defer all art funding/allocation to a separate process
 - ❖ Capture all value engineering recommendations that do not substantially alter character and mission of project

40%



70%



40%



70%



- ❖ Significant project changes from and since 8/11 Commissioner's Court, continued:
 - ❖ Refine design between Commerce Street and Travis Street
 - ❖ Shift Alameda performance stage from east bank, revise superstructure, less property from Santa Rosa
 - ❖ Design footprint to include Dollar General parcel
 - ❖ Avoid permanent taking of most existing parking at Penner's, east bank (rework design from Alameda addition to Commerce Street)

- ❖ Significant project changes from and since 8/11 Commissioner's Court, continued:
 - ❖ Refine design for Phase 2:
 - ❖ Reduction in walls and terracing from Camp St. to South Alamo St.
 - ❖ Downstream of South Alamo to Railroad flood control only (no paseos until Phases 3 and 4 constructed)
 - ❖ Other value engineering concepts to be captured

DESIGN ACTIVITY UPDATE



- ❖ Current and ongoing design activities:
 - ❖ Solidify proposed scope between Commerce and Travis Streets, as well as Phase 2
 - ❖ Solidify H&H, floodplain details related to final scope for Phases 1 and 2
 - ❖ Advance the design in other areas for Phases 1 and 2

LANDSCAPE

KEY PROJECT ELEMENTS

SAN PEDRO CREEK (all character areas)

- 2 miles of channel
- 10.3 acres of landscaped area
- 1,000 trees

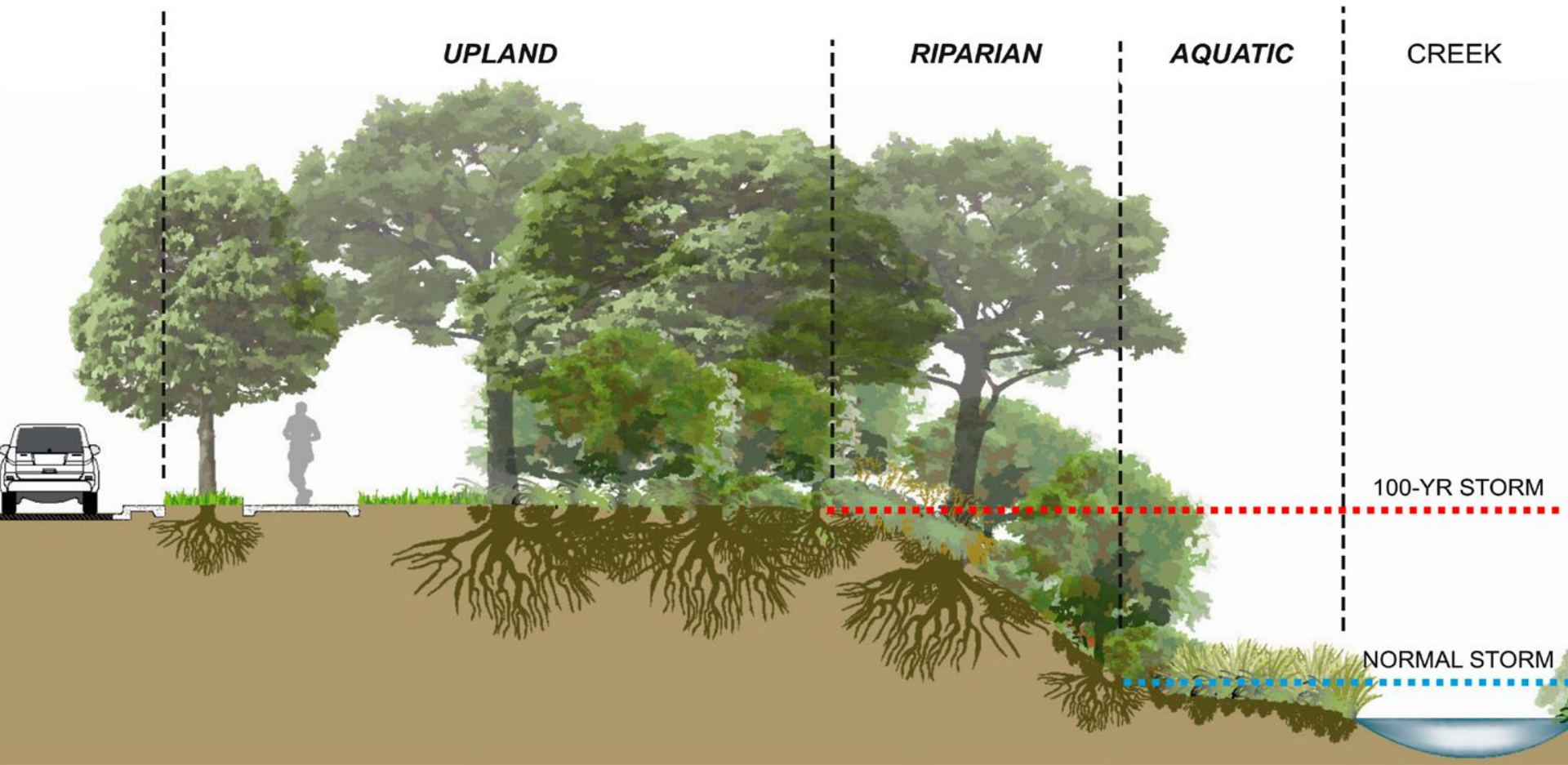
PHASE 1 & 2

- 1.0 miles of channel
- 4.1 acres landscaped area
- 490 trees

MUSEUM REACH

- 1.3 miles of channel
- 3.0 acres landscaped area
- 270 trees

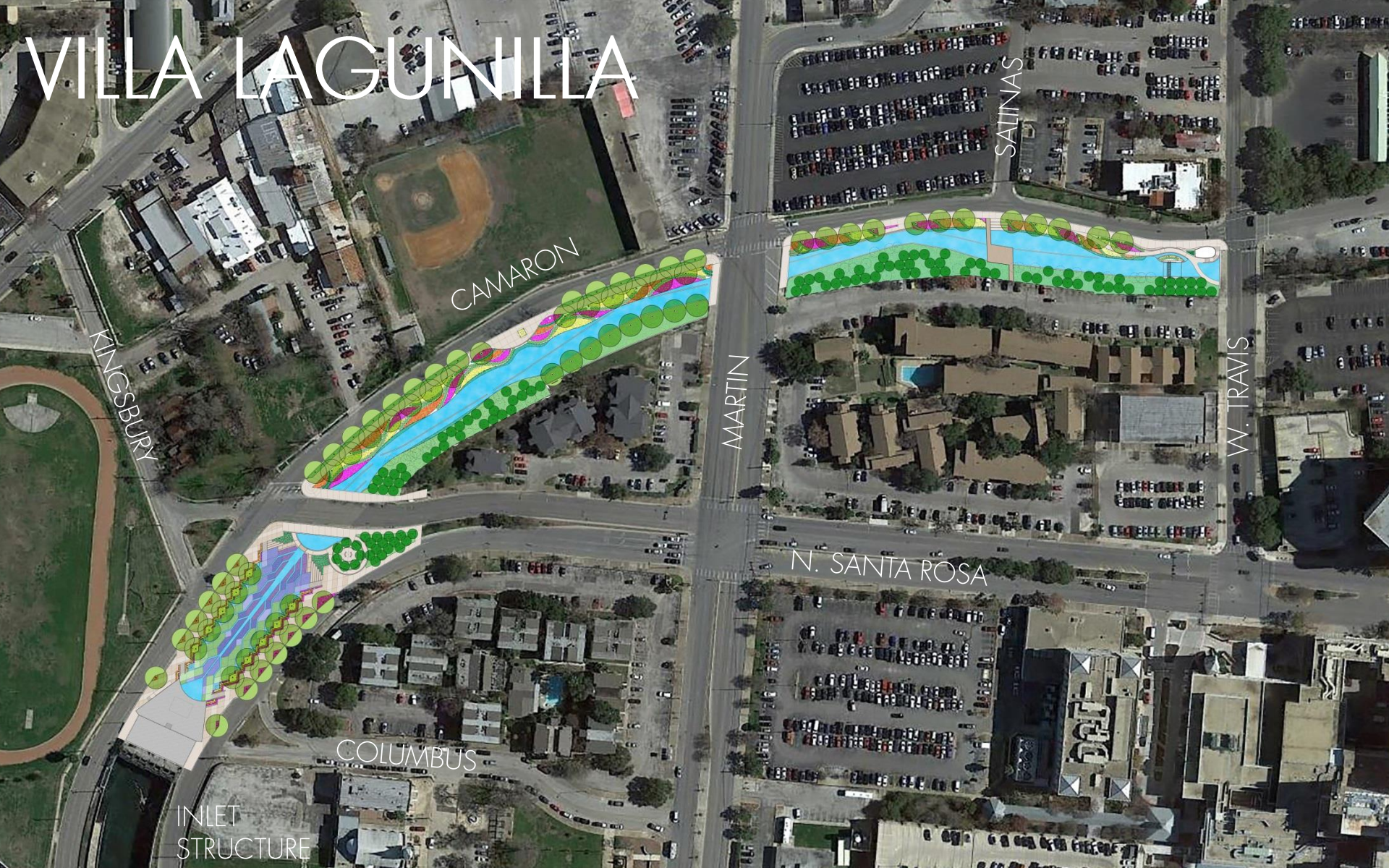
LOCAL



INSPIRATION



VILLA LAGUNILLA



KINGSBURY

CAMARON

MARTIN

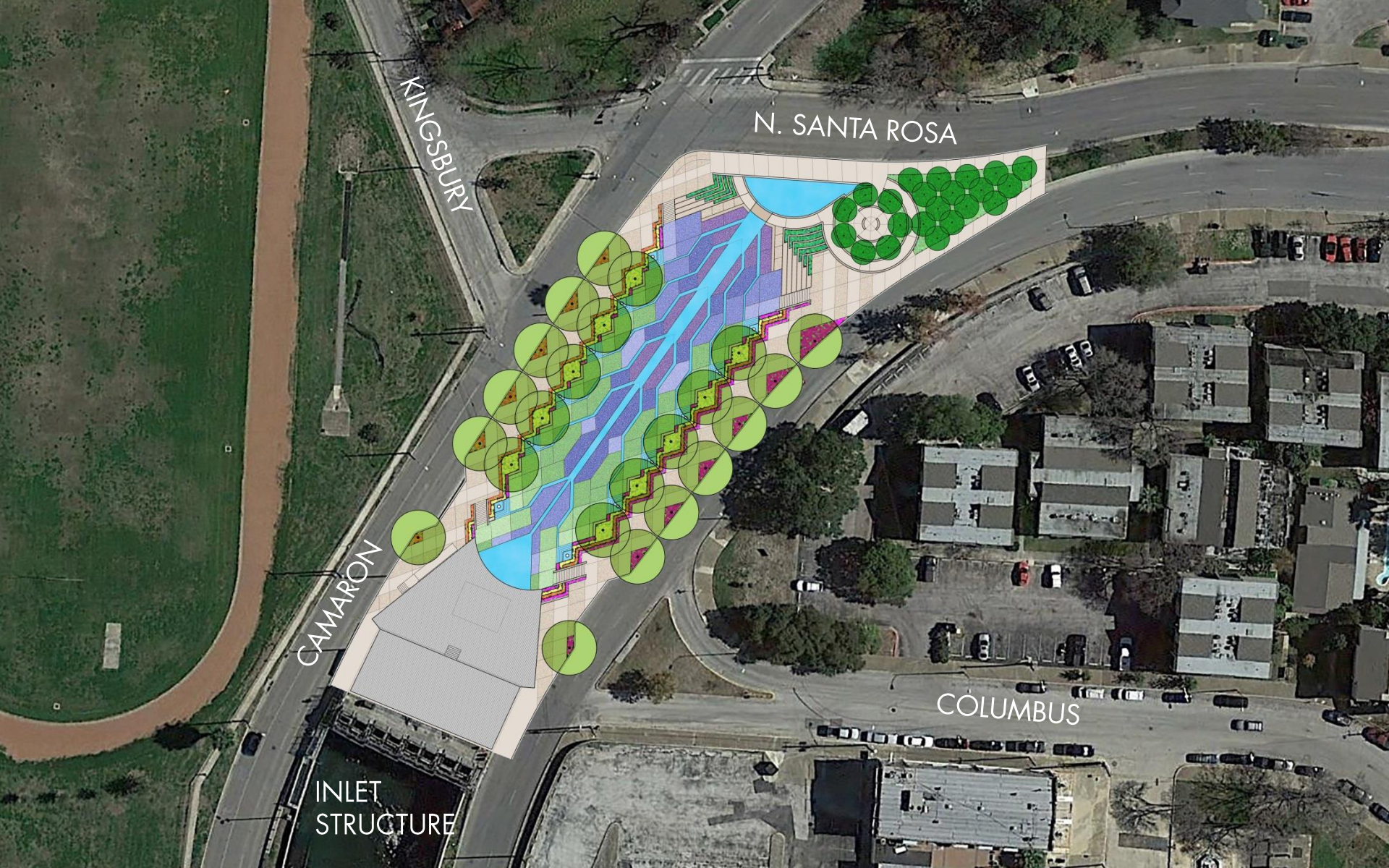
SATINAS

W. TRAVIS

N. SANTA ROSA

COLUMBUS

INLET
STRUCTURE



KINGSBURY

N. SANTA ROSA

CAMARON

COLUMBUS

INLET
STRUCTURE



CAMARON

N. SANTA ROSA

MARTIN



CAMARON

MARTIN

W. TRAVIS

PLANT PALETTE

LARGE & SMALL TREES				
Common Name	Scientific Name	Aquatic	Riparian	Upland
Huisache	<i>Acacia farnesiana</i>			X
Blackbrush acacia	<i>Acacia rigidula</i>			X
Boxelder	<i>Acer negundo</i>		X	
Texas buckeye	<i>Aesculus glabra var. arguta</i>	X	X	
Anacacho orchid tree	<i>Bauhinia lunaroides</i>			X
Pecan	<i>Carya illinoensis</i>		X	
Netleaf hackberry	<i>Celtis laevigata var. reticulata</i>			X
Texas redbud	<i>Cercis canadensis var. texensis</i>			X
Desert willow	<i>Chilopsis linearis</i>		X	X
Mexican olive	<i>Cordia boissieri</i>		X	X
Texas persimmon	<i>Diospyros texana</i>			X
Anacua	<i>Ehretia anacua</i>			X
Arizona ash	<i>Fraxinus velutina</i>			X
Black walnut	<i>Juglans nigra</i>		X	
Wax myrtle	<i>Morella cerifera</i>	X	X	
Red mulberry	<i>Morus rubra</i>		X	X
Paloverde	<i>Parkinsonia aculeata</i>		X	X
Texas sycamore	<i>Platanus mexicana x occidentalis</i>		X	
Cottonwood	<i>Populus deltoides</i>	X	X	X
Carolina cherry laurel	<i>Prunus caroliniana</i>		X	
Mexican plum	<i>Prunus mexicana</i>		X	X
Texas red oak	<i>Quercus buckleyi</i>			X
Texas live oak	<i>Quercus fusiformis</i>			X
Bur oak	<i>Quercus macrocarpa</i>	X	X	X
Black willow	<i>Salix nigra</i>	X	X	
Texas mountain laurel	<i>Sophora secundiflora</i>		X	X
Bald cypress	<i>Taxodium distichum</i>	X	X	
Montezuma cypress	<i>Taxodium mucronatum</i>	X	X	
American elm	<i>Ulmus americana</i>		X	
Cedar elm	<i>Ulmus crassifolia</i>		X	
Mexican buckeye	<i>Ungnadia speciosa</i>			X



BUTTERFLY WEED



TURK'S CAP



VELVET LEAF SENNA



AMERICAN BEAUTYBERRY



HUISACHE



BALD CYPRESS



LITTLE BLUESTEM



HORSETAIL



WATER LILY



INLAND SEA OATS

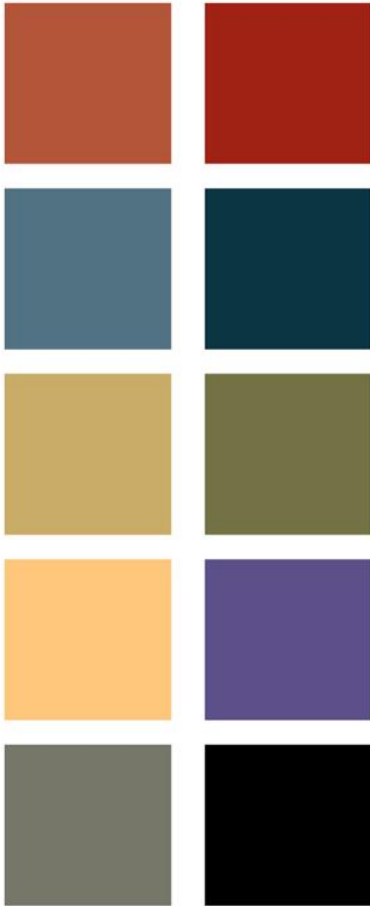


DWARF PALMETTO



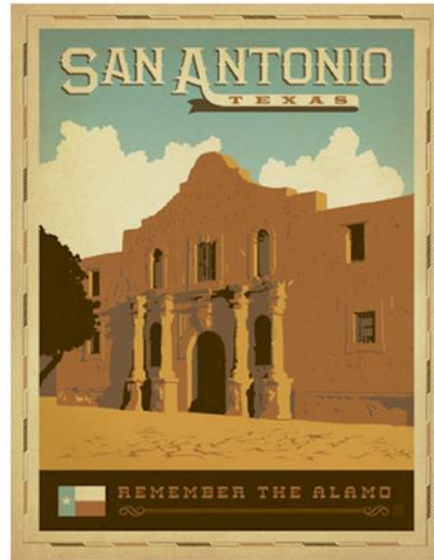
INDIAN BLANKET

WAYFINDING



NATURE'S PALETTE

The color palette for graphics are based on rich tones found in nature that are expressed in craft: the earth tones of pottery glazes, the deep floral hues of vegetable-dyed yarns, the grasses woven into baskets, and the serigraphs of vintage travel posters.



Connecting Upper to Lower, East to West, North to South

Identifying Entrances

Connections - from street level to creek level, and from creek level back up to street level are key elements in the wayfinding system. Entrances to San Pedro Creek at street crossings will be clearly marked by graphic pylons at each of these connections. These should be visible day & night, and would be illuminated to function as "beacons" to street level pedestrians that they are entering a unique and exciting destination.



Option A, L1
Glowing light tubes would feature images of artwork created by local artists. The artwork would be illuminated by LED lights to be visible at night. The artwork would be illuminated by LED lights to be visible at night. The artwork would be illuminated by LED lights to be visible at night.

Option B
Glowing light tubes would feature changing images of artwork created by local artists. The artwork would be illuminated by LED lights to be visible at night. The artwork would be illuminated by LED lights to be visible at night. The artwork would be illuminated by LED lights to be visible at night.

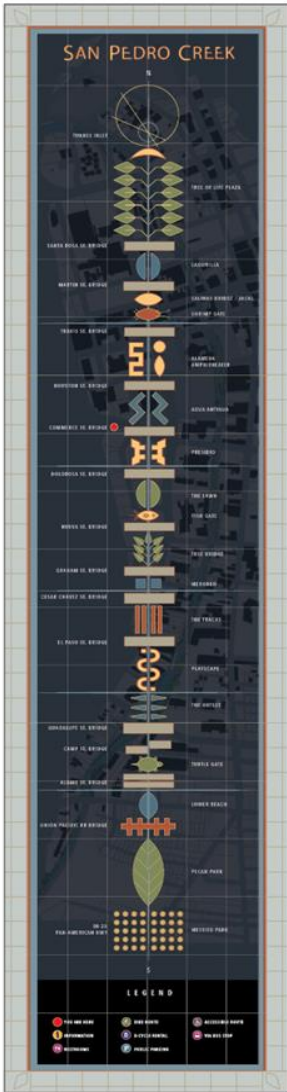
Option C
Glowing light tubes with color changing internal LED illuminators. Materials: frosted acrylic with structure with programmable LED illuminators.

Maps & Directional Signs

Maps of the creek, pedestrian directional signs and street identities will be located at entries and stairways to the park. Maps will include a full plan of the park, and will identify street connections and amenities such as restrooms, water fountains, bike rental stations, plazas, pavilions, and parking, as well as pedestrian pathways and bridges. These signs will be incorporated into walls or other surfaces where possible along narrow sections of the creek. In more open areas, these will be designed as freestanding structures.



The sign above a street identity and directional sign on the street wall surface. The wall surface is made of stone or concrete in a pattern to the street level.



Los Manantiales | Water from the Earth or Footprints | Migrations



The first Spanish Settlement may have been located in this area near San Pedro Creek. Early settlement consisted of cultivated pastures and small homesteads. The Celso Navarro house once stood where the Fox Field housing currently is, was so named for the fresh water springs that once flourished in the creek.

1691-1793

San Pedro Springs

The first Spanish Settlement may have been located in this area near San Pedro Creek. Early settlement consisted of cultivated pastures and small homesteads.

The Celso Navarro house once stood where the Fox Field housing currently is, was so named for the fresh water springs that once flourished in the creek.

Martin de Alarcon 1st Governor of Texas

The Heron | Place of Origins

The aztecs called their original homeland The Place of the HERONS for the bird that symbolizes where our history begins, where generations settled and built communities and churches and businesses that continue to grow and flourish along the banks of San Pedro Creek

The Heron = [ORIGINS]
where the original San Antonians lived along the banks of San Pedro Creek.

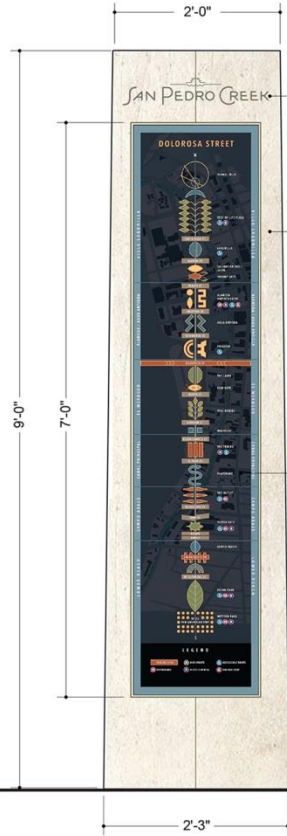
OUR COMMUNITY...

It is here where we mark the beginning the seeds of a story, a series of stories about our culture, our community... "our place"

DISCOVER THE STORIES THAT HAVE UNFOLDED FOR GENERATIONS ALONG ITS PATH

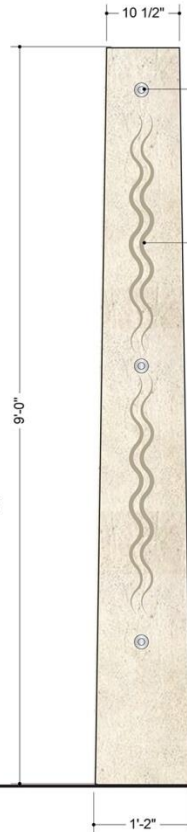
MYTHICAL THEME WALL TREATMENT

Simulated stone composite, cast concrete or sandblasted "feathers", symbolic of the Heron, form a subtle yet dimensional component of the wall. Text would be sandblasted into the wall surface. Larger text letters could be cast in simulated stone composite and mounted to the wall creating a multi-layered surface.



FRONT & REAR ELEVATIONS
Scale: 3/4" = 1'-0"

- Logo: sandblasted into cast stone or concrete slab & tint-infilled
- Pylon: cast concrete or simulated stone slabs with slightly-chamfered edges
- Map: porcelain enamel panel on steel or aluminum substrate; panel to be inset into the stone on both sides of pylon; oriented in direction of travel

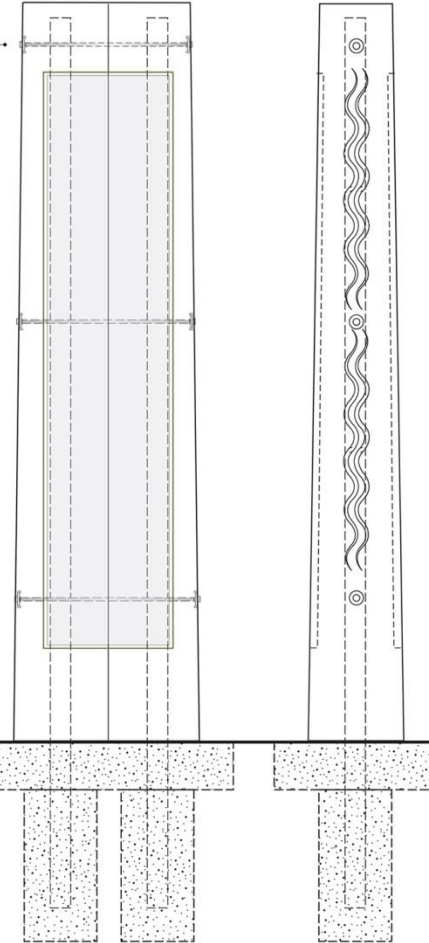


SIDE VIEW

- Side Bolts: stainless st bolt/washer countersunk into concrete, attached to stainless rod threaded thru concrete slabs for reinforcement
- Graphic: sandblasted into cast concrete slab & tint-infilled

Footing: steel-reinforced, cast concrete foundation

MAP PYLON could be located at top of the high-bank street intersections; orientation would be North/South. Map could be illuminated at night with ground-mounted LED wall-washers.



PROPERTY OWNER COORDINATION



- ❖ Christopher Columbus Italian Society
- ❖ Doneraki Mexican Restaurant
- ❖ Judson Lofts

SAN PEDRO CREEK IMPROVEMENTS PROJECT



SAN ANTONIO
RIVER AUTHORITY
Leaders in Watershed Solutions