



San Pedro Creek

improvements project

CONNECTING COMMUNITIES

Design and Construction Update



Design Development

Tunnel Inlet to Houston Street

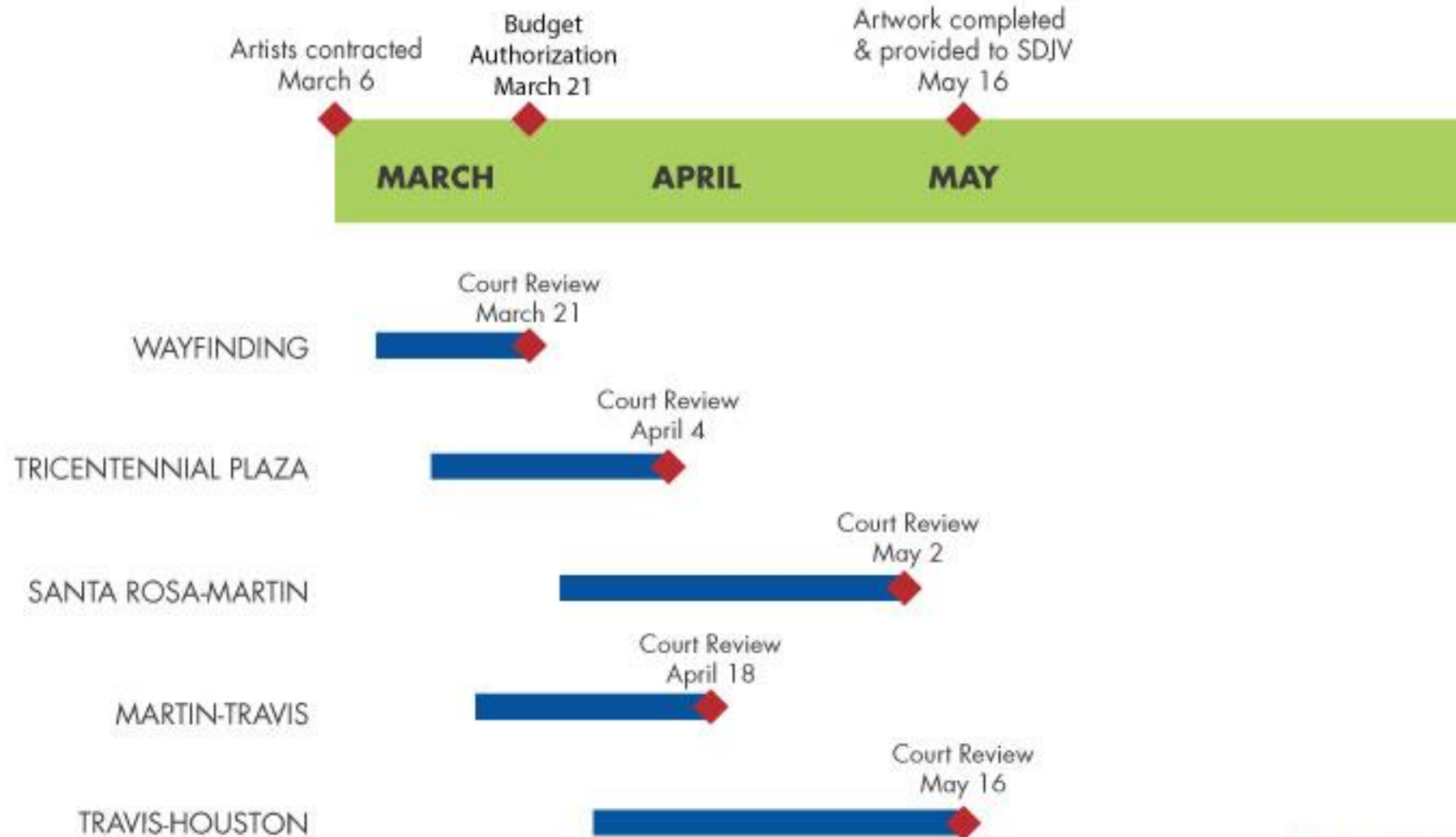
- Feb 28: Final design documents were submitted for pricing
 - Coordinating with SDJV for submittal of tunnel inlet screen design
- Apr 27: Price proposal from SDJV for remainder of scope

Design Development

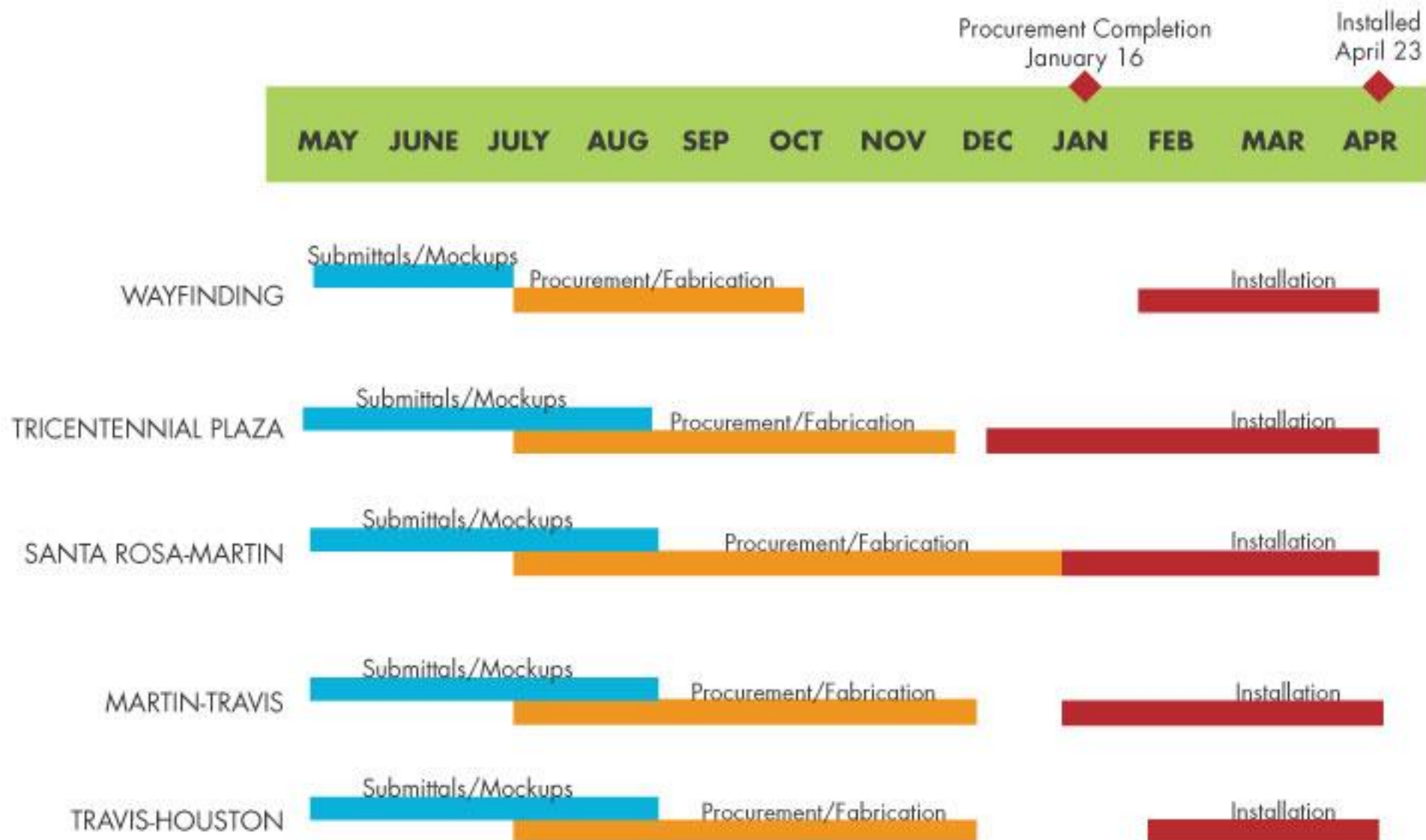
Tunnel Inlet to Houston Street

- Ongoing coordination between design team and SDJV for interpretive art elements
 - Artist engagement
 - Design and construction coordination
 - Material selection and procurement
 - Series of presentations on art elements to Commissioners Court
- Coordination with Plethora art team ongoing
 - Location Finalized

INTERPRETIVE ART DELIVERY SCHEDULE



INTERPRETIVE ART DELIVERY SCHEDULE



Design Development

Phase 1 South of Houston and Phase 2

- May 19: 90% Design Submittal to be submitted for pricing
- July 15: Guaranteed Maximum Price (GMP) from SDJV
- Sept 1: Projected start of construction south of Houston Street

Construction Activities

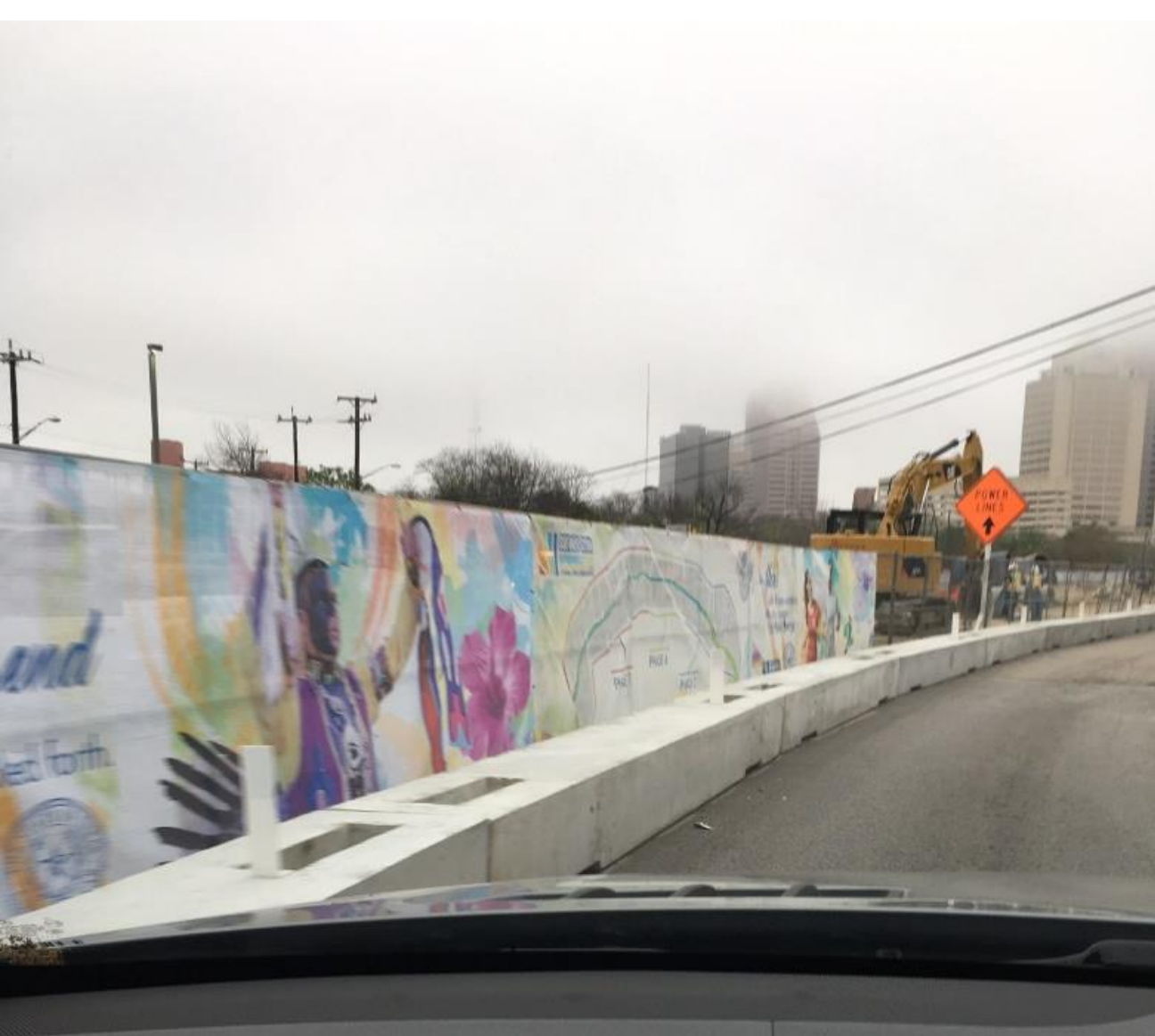
- Utility Relocations
 - Completing hand holes and restoration on Nueva Street
- AT&T work ongoing on Nueva
- Coordinating with contractor for Spectrum and AT&T work



Construction Activities

- Excavation at Tunnel Inlet
- Tree removal from Santa Rosa to Martin
- Installation of storm water infrastructure
- Channel demolition under Santa Rosa
- Installation of fountain piping



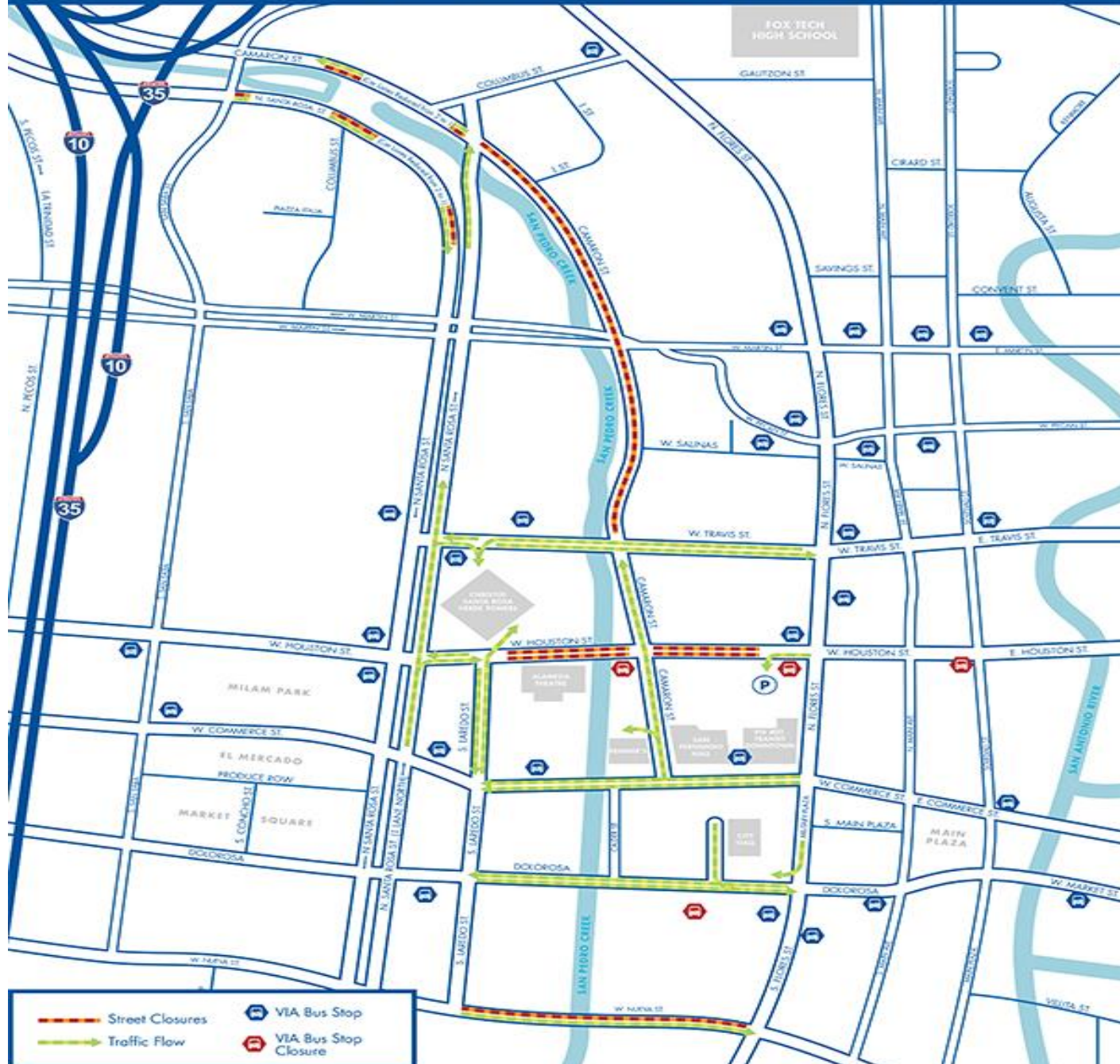


san pedro creek
improvements project
CONNECTING COMMUNITIES
WWW.SPCPROJECT.ORG

Traffic Control Schedule

- Current Closures
 - Westbound lane of Nueva Street
 - Houston Street from Laredo to Flores
 - Camaron Street from Travis to Santa Rosa
 - One lane on Camaron from Santa Rosa to San Saba
 - One lane on Santa Rosa from San Saba to Martin

CURRENT LANE AND STREET CLOSURES



Traffic Control Schedule

Upcoming Closures

- March 13: Full closure of Santa Rosa from San Saba to Martin for two weeks
- March
 - Tunnel inlet to Houston – Closures will not change
 - Commerce and Dolorosa- working with AT&T and Spectrum to coordinate work
 - Nueva Street: Westbound lane closed until March 20

Traffic Control Schedule

Projected Closures

- Full closure of Commerce Street:
September/October 2017 for 3 months
 - Houston Street will be fully opened during the full closure of Commerce Street
- Projected closures of other street bridges in Phases 1 & 2 approved by COSA
 - Schedule being generated

Upcoming Activities

- Continue installation of storm water infrastructure at tunnel inlet
- Continue utility work on Nueva Street
- Excavation from Santa Rosa to Martin
- Installation of equalization piping from the tunnel inlet to Santa Rosa



Upcoming Activities

- Tree removal from Santa Rosa to Houston
- Construction of structures at tunnel inlet
- Construction Tour: March 31



San Pedro Creek

improvements project

CONNECTING COMMUNITIES